

E



Storage Facility Design Drawings

*ISSUED FOR ENGINEERING COST STUDY
DECEMBER, 2013*

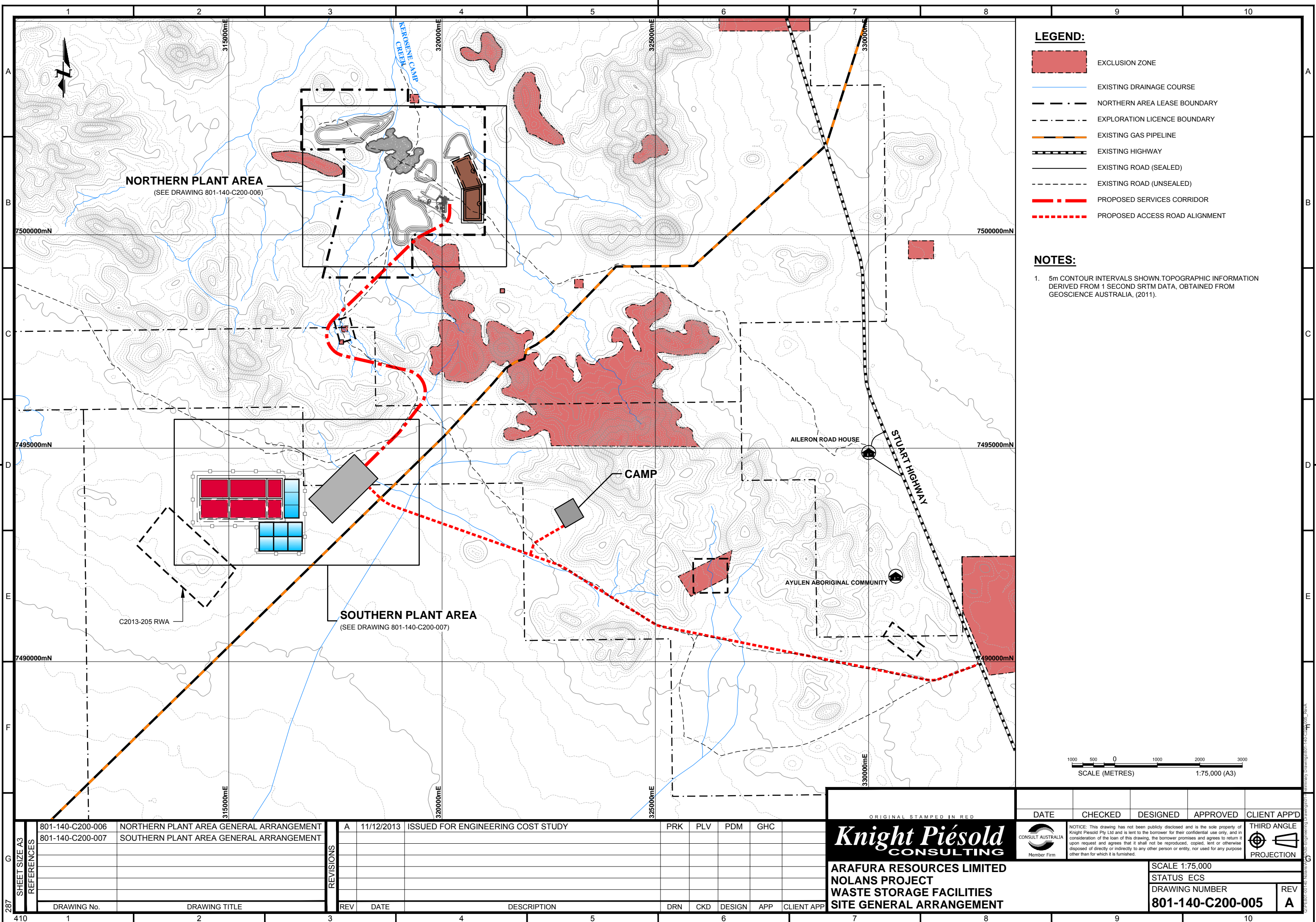
ARAFURA RESOURCES LIMITED

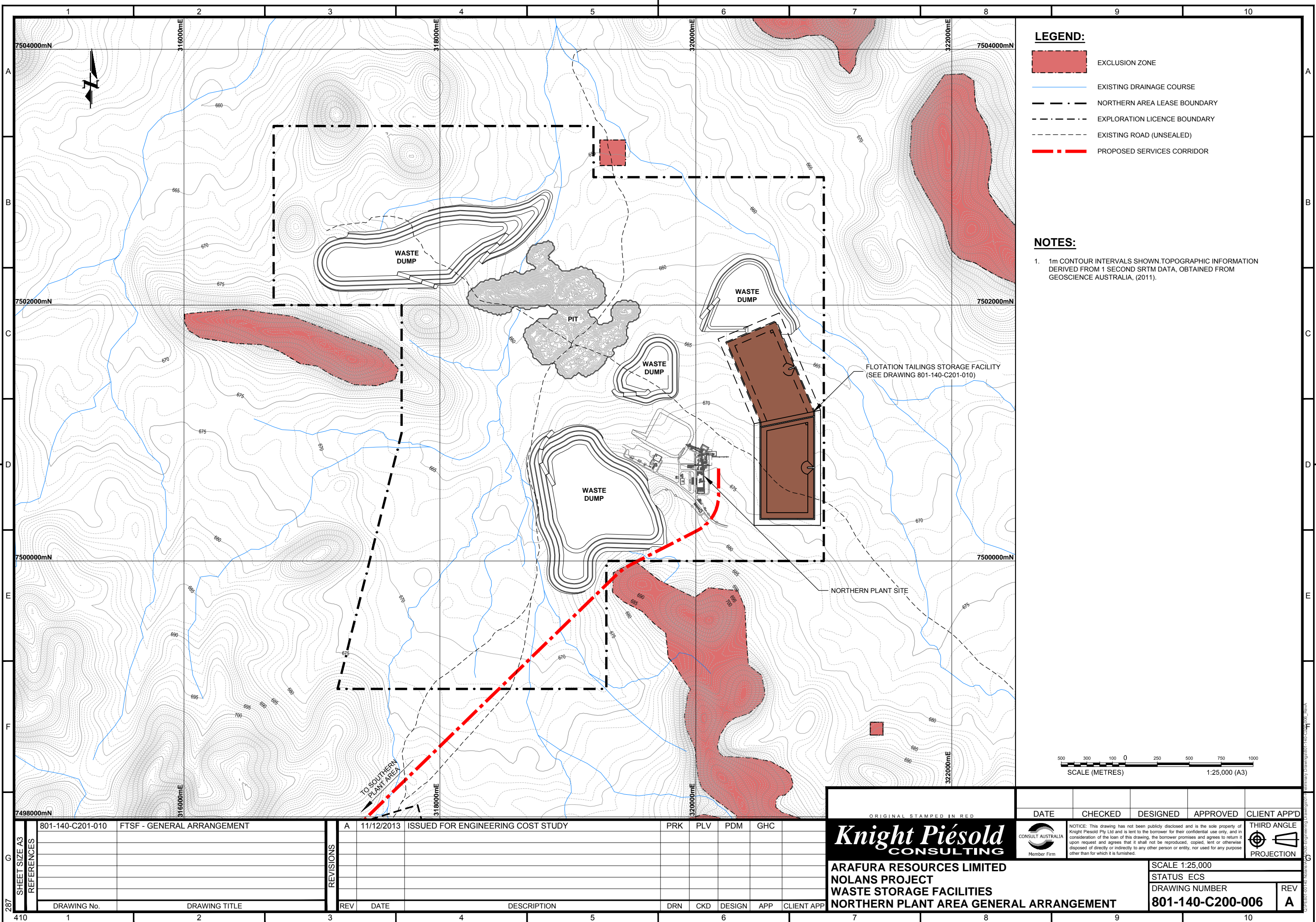
Knight Piésold
CONSULTING

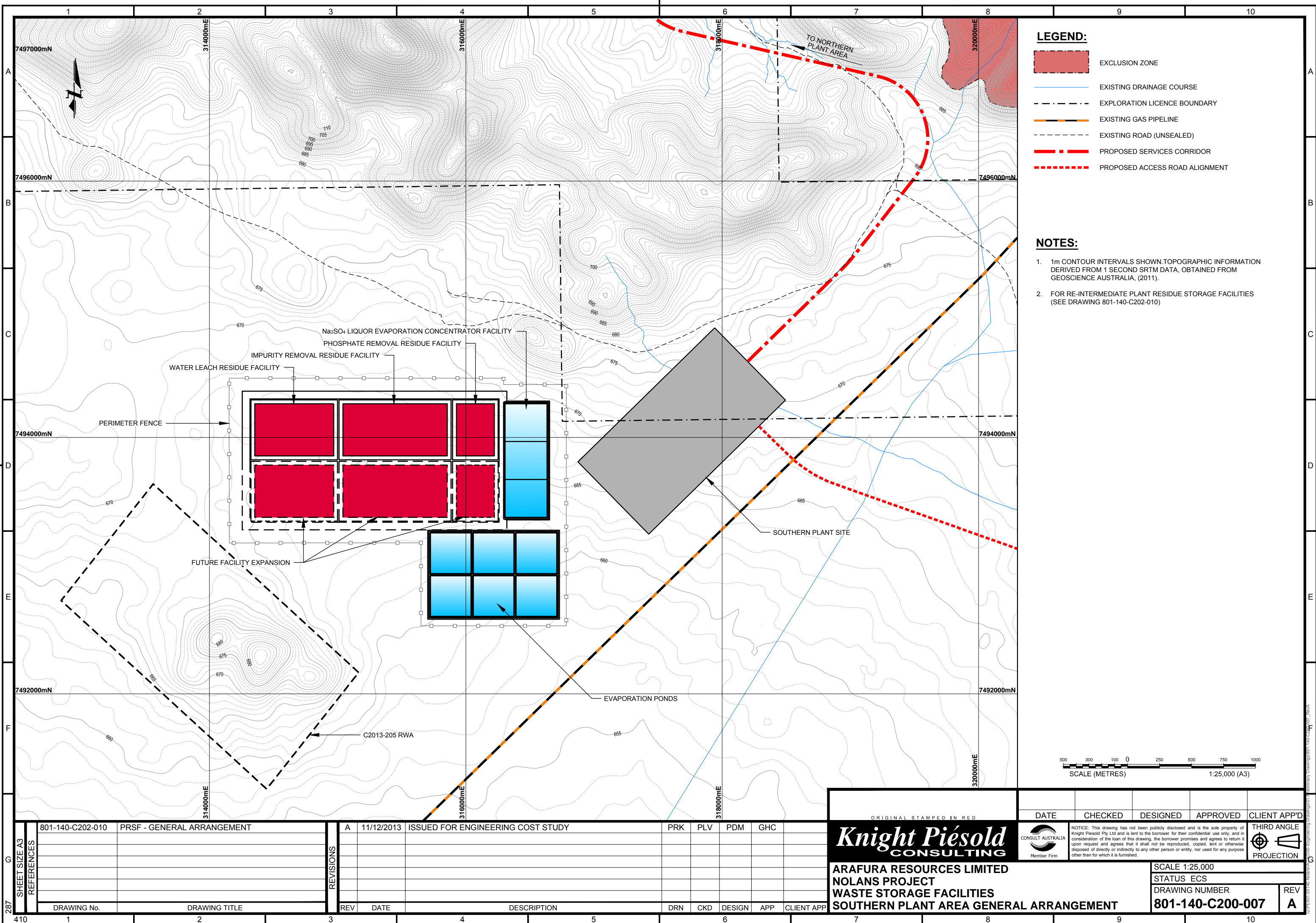
Knight Piésold Pty. Ltd. Level
1, 184 Adelaide Terrace
EAST PERTH, WA 6004
AUSTRALIA

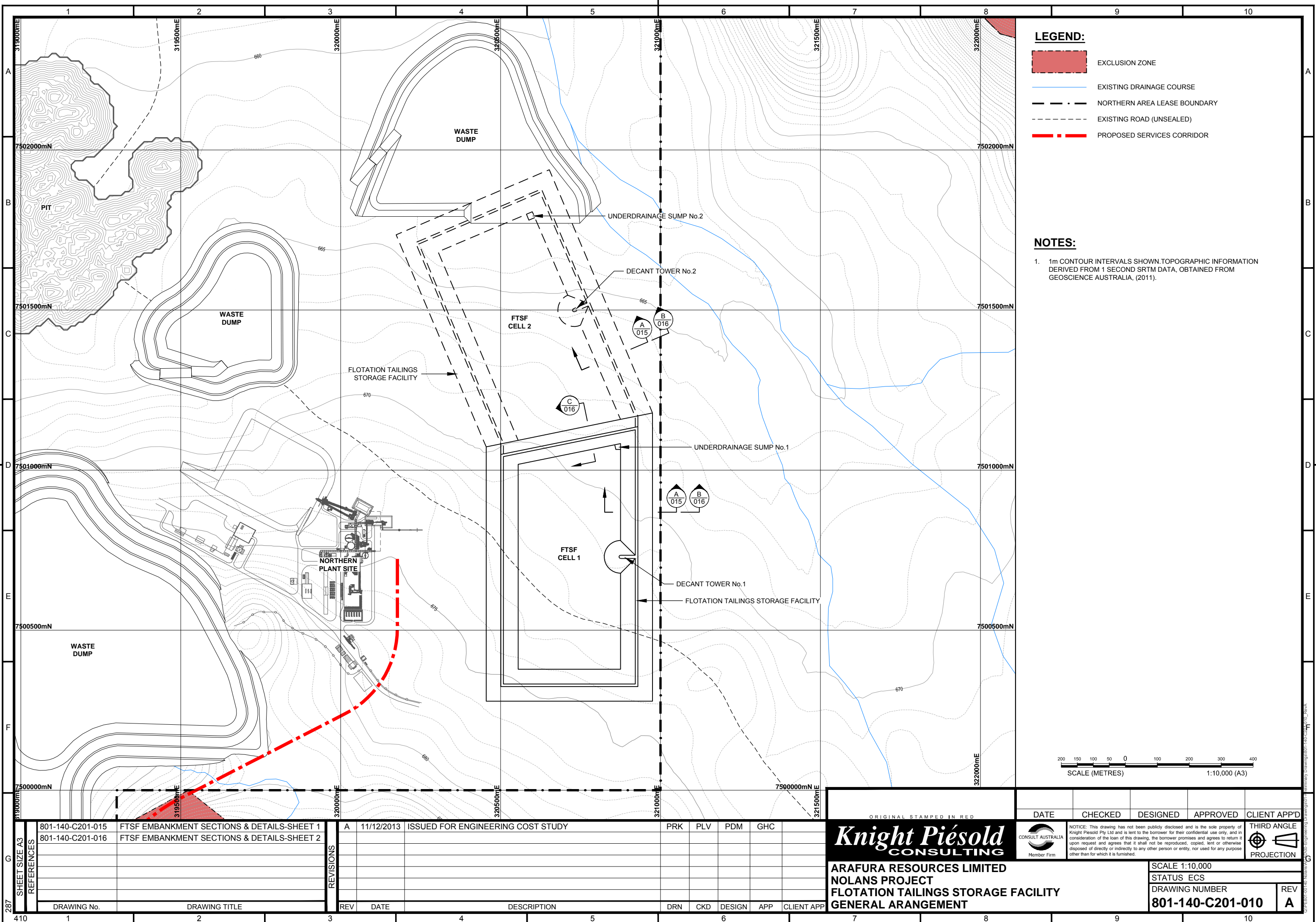
										ORIGINAL STAMPED IN RED		DATE	CHECKED	DESIGNED	APPROVED	CLIENT APP'D						
										Knight Piésold CONSULTING		 CONSULT AUSTRALIA Member Firm	NOTICE: This drawing has not been publicly disclosed and is the sole property of Knight Piesold Pty Ltd and is lent to the borrower for their confidential use only, and in consideration of the loan of this drawing, the borrower promises and agrees to return it upon request and agrees that it shall not be reproduced, copied, lent or otherwise disposed of directly or indirectly to any other person or entity, nor used for any purpose other than for which it is furnished.				THIRD ANGLE  PROJECTION					
										ARAFURA RESOURCES LIMITED NOLANS PROJECT WASTE STORAGE FACILITIES TITLE PAGE										SCALE N.T.S.		
																				STATUS ECS		
																				DRAWING NUMBER		REV
																				801-140-C200-001		A

SHEET SIZE A3	REFERENCES																																																																																																																																																																																																																																																																																																																																																																																																																																																																																																																													
---------------	------------	--	--	--	--	--	--	--	--	--	--	--	--	--	--	--	--	--	--	--	--	--	--	--	--	--	--	--	--	--	--	--	--	--	--	--	--	--	--	--	--	--	--	--	--	--	--	--	--	--	--	--	--	--	--	--	--	--	--	--	--	--	--	--	--	--	--	--	--	--	--	--	--	--	--	--	--	--	--	--	--	--	--	--	--	--	--	--	--	--	--	--	--	--	--	--	--	--	--	--	--	--	--	--	--	--	--	--	--	--	--	--	--	--	--	--	--	--	--	--	--	--	--	--	--	--	--	--	--	--	--	--	--	--	--	--	--	--	--	--	--	--	--	--	--	--	--	--	--	--	--	--	--	--	--	--	--	--	--	--	--	--	--	--	--	--	--	--	--	--	--	--	--	--	--	--	--	--	--	--	--	--	--	--	--	--	--	--	--	--	--	--	--	--	--	--	--	--	--	--	--	--	--	--	--	--	--	--	--	--	--	--	--	--	--	--	--	--	--	--	--	--	--	--	--	--	--	--	--	--	--	--	--	--	--	--	--	--	--	--	--	--	--	--	--	--	--	--	--	--	--	--	--	--	--	--	--	--	--	--	--	--	--	--	--	--	--	--	--	--	--	--	--	--	--	--	--	--	--	--	--	--	--	--	--	--	--	--	--	--	--	--	--	--	--	--	--	--	--	--	--	--	--	--	--	--	--	--	--	--	--	--	--	--	--	--	--	--	--	--	--	--	--	--	--	--	--	--	--	--	--	--	--	--	--	--	--	--	--	--	--	--	--	--	--	--	--	--	--	--	--	--	--	--	--	--	--	--	--	--	--	--	--	--	--	--	--	--	--	--	--	--	--	--	--	--	--	--	--	--	--	--	--	--	--	--	--	--	--	--	--	--	--	--	--	--	--	--	--	--	--	--	--	--	--	--	--	--	--	--	--	--	--	--	--	--	--	--	--	--	--	--	--	--	--	--	--	--	--	--	--	--	--	--	--	--	--	--	--	--	--	--	--	--	--	--	--	--	--	--	--	--	--	--	--	--	--	--	--	--	--	--	--	--	--	--	--	--	--	--	--	--	--	--	--	--	--	--	--	--	--	--	--	--	--	--	--	--	--	--	--	--	--	--	--	--	--	--	--	--	--	--	--	--	--	--	--	--	--	--









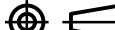


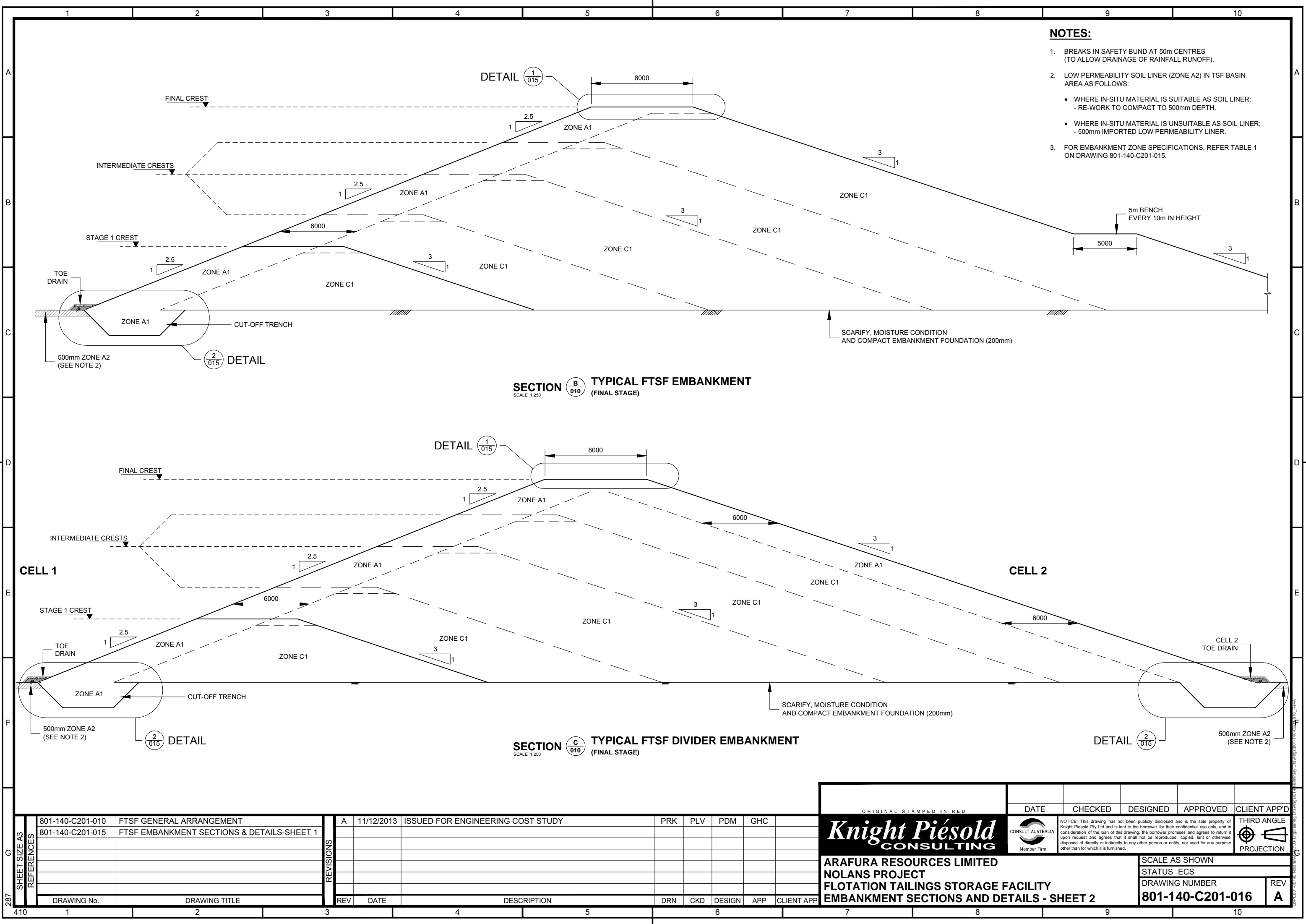


ZONE TYPE	ZONE DESCRIPTION	COMPACTION SPECIFICATION
ZONE A1	LOW PERMEABILITY FILL	98% SMDD -1% <OMC < +3% 300mm LAYERS
ZONE A2	BASIN LOW PERMEABILITY SOIL LINER	98% SMDD -1% <OMC < +3% 2 LAYERS MIN.
ZONE C1	STRUCTURAL FILL (RUN OF MINE WASTE)	95% SMDD -2% <OMC < +2% 500mm LAYERS
ZONE D	RANDOM FILL	92% SMDD 700mm LAYERS
ZONE E	EROSION PROTECTION	D _{MAX} = 400mm % FINES < 5
ZONE F	DRAINAGE MEDIUM (SAND OR FINE GRAVEL)	UNIFORM DENSITY FREE FROM CAVITIES
ZONE G	SELECTED ROCKFILL	D _{MAX} = 500mm % FINES < 5 D _{AVG} = 50mm
CLEAN GRAVEL	SELECTED FILL	D _{MAX} = 50mm % FINES < 5
EMBANKMENT FOUNDATION	IN-SITU MATERIAL AS APPROVED BY THE ENGINEER	95% SMDD -1% <OMC < +3%
WEARING COURSE	SELECTED GRAVEL	98% SMDD -0% <OMC < +3% 300mm LAYERS



REVISIONS	A	11/12/2013	ISSUED FOR ENGINEERING COST STUDY	PRK	PLV	PDM	GHC	
REV	DATE	DESCRIPTION	DRN	CKD	DESIGN	APP	CLIENT APP	

<div>ORIGINAL STAMPED IN RED</div> <div>  </div>		DATE	CHECKED	DESIGNED	APPROVED	CLIENT APP'D
		<div>  </div>				<div> <div>THIRD ANGLE</div> <div>  </div> <div>PROJECTION</div> </div>
<div> <div> <div>NOTICE: This drawing has not been publicly disclosed and is the sole property of Knight Piésold Pty Ltd and is lent to the borrower for their confidential use only, and in consideration of the loan of this drawing, the borrower promises and agrees to return it upon request and agrees that it shall not be reproduced, copied, lent or otherwise disposed of directly or indirectly to any other person or entity, nor used for any purpose other than for which it is furnished.</div> </div> </div>						<div> <div>SCALE AS SHOWN</div> <div>STATUS ECS</div> <div> <div>DRAWING NUMBER</div> <div>801-140-C201-015</div> </div> <div> <div>REV</div> <div>A</div> </div> </div>



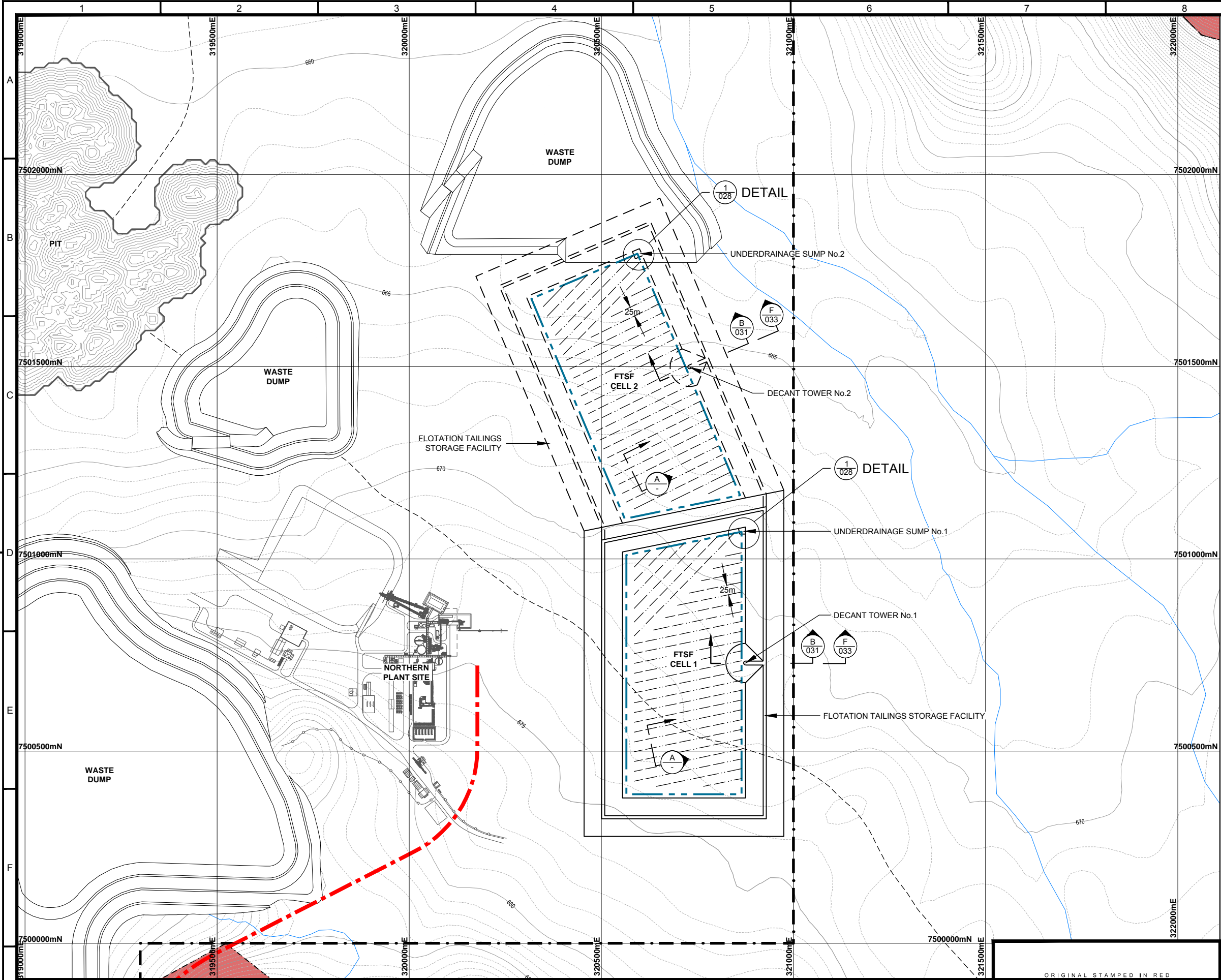
- NOTES:**
- 1. BREAKS IN SAFETY BUND AT 50m CENTRES (TO ALLOW DRAINAGE OF RAINFALL RUNOFF).
 - 2. LOW PERMEABILITY SOIL LINER (ZONE A2) IN TSF BASIN AREA AS FOLLOWS:
 - WHERE IN-SITU MATERIAL IS SUITABLE AS SOIL LINER:
 - RE-WORK TO COMPACT TO 500mm DEPTH.
 - WHERE IN-SITU MATERIAL IS UNSUITABLE AS SOIL LINER:
 - 500mm IMPORTED LOW PERMEABILITY LINER.
 - 3. FOR EMBANKMENT ZONE SPECIFICATIONS, REFER TABLE 1 ON DRAWING 801-140-C201-015.

SECTION B
SCALE 1:250
TYPICAL FTSF EMBANKMENT
(FINAL STAGE)

SECTION C
SCALE 1:250
TYPICAL FTSF DIVIDER EMBANKMENT
(FINAL STAGE)

287	SHEET SIZE A3 REFERENCES	801-140-C201-010	FTSF GENERAL ARRANGEMENT	REVISONS	A	11/12/2013	ISSUED FOR ENGINEERING COST STUDY	PRK	PLV	PDM	GHC	
		801-140-C201-015	FTSF EMBANKMENT SECTIONS & DETAILS-SHEET 1									
		DRAWING No.	DRAWING TITLE	REV	DATE	DESCRIPTION	DRN	CKD	DESIGN	APP	CLIENT APP	

ORIGINAL STAMPED IN RED		DATE	CHECKED	DESIGNED	APPROVED	CLIENT APP'D
<div><div><div><div><div></div><div></div></div><div><div></div><div></div></div></div><div><div><div><div></div><div></div></div><div><div></div><div></div></div></div><div><div><div><div></div><div></div></div><div><div></div><div></div></div></div><div><div><div><div></div><div></div></div><div><div></div><div></div></div></div></div><div><div><div><div></div><div></div></div><div><div></div><div></div></div></div><div><div><div><div></div><div></div></div><div><div></div><div></div></div></div></div><div><div><div><div></div><div></div></div><div><div></div><div></div></div></div><div><div><div><div></div><div></div></div><div><div></div><div></div></div></div></div><div><div><div><div></div><div></div></div><div><div></div><div></div></div></div><div><div><div><div></div><div></div></div><div><div></div><div></div></div></div></div><div><div><div><div></div><div></div></div><div><div></div><div></div></div></div><div><div><div><div></div><div></div></div><div><div></div><div></div></div></div></div><div><div><div><div></div><div></div></div><div><div></div><div></div></div></div><div><div><div><div></div><div></div></div><div><div></div><div></div></div></div></div><div><div><div><div></div><div></div></div><div><div></div><div></div></div></div><div><div><div><div></div><div></div></div><div><div></div><div></div></div></div></div><div><div><div><div></div><div></div></div><div><div></div><div></div></div></div><div><div><div><div></div><div></div></div><div><div></div><div></div></div></div></div><div><div><div><div></div><div></div></div><div><div></div><div></div></div></div><div><div><div><div></div><div></div></div><div><div></div><div></div></div></div></div><div><div><div><div></div><div></div></div><div><div></div><div></div></div></div><div><div><div><div></div><div></div></div><div><div></div><div></div></div></div></div><div><div><div><div></div><div></div></div><div><div></div><div></div></div></div><div><div><div><div></div><div></div></div><div><div></div><div></div></div></div></div><div><div><div><div></div><div></div></div><div><div></div><div></div></div></div><div><div><div><div></div><div></div></div><div><div></div><div></div></div></div></div><div><div><div><div></div><div></div></div><div><div></div><div></div></div></div><div><div><div><div></div><div></div></div><div><div></div><div></div></div></div></div><div><div><div><div></div><div></div></div><div><div></div><div></div></div></div><div><div><div><div></div><div></div></div><div><div></div><div></div></div></div></div><div><div><div><div></div><div></div></div><div><div></div><div></div></div></div><div><div><div><div></div><div></div></div><div><div></div><div></div></div></div></div><div><div><div><div></div><div></div></div><div><div></div><div></div></div></div><div><div><div><div></div><div></div></div><div><div></div><div></div></div></div></div><div><div><div><div></div><div></div></div><div><div></div><div></div></div></div><div><div><div><div></div><div></div></div><div><div></div><div></div></div></div></div><div><div><div><div></div><div></div></div><div><div></div><div></div></div></div><div><div><div><div></div><div></div></div><div><div></div><div></div></div></div></div><div><div><div><div></div><div></div></div><div><div></div><div></div></div></div><div><div><div><div></div><div></div></div><div><div></div><div></div></div></div></div><div><div><div><div></div><div></div></div><div><div></div><div></div></div></div><div><div><div><div></div><div></div></div><div><div></div><div></div></div></div></div><div><div><div><div></div><div></div></div><div><div></div><div></div></div></div><div><div><div><div></div><div></div></div><div><div></div><div></div></div></div></div><div><div><div><div></div><div></div></div><div><div></div><div></div></div></div><div><div><div><div></div><div></div></div><div><div></div><div></div></div></div></div><div><div><div><div></div><div></div></div><div><div></div><div></div></div></div><div><div><div><div></div><div></div></div><div><div></div><div></div></div></div></div><div><div><div><div></div><div></div></div><div><div></div><div></div></div></div><div><div><div><div></div><div></div></div><div><div></div><div></div></div></div></div><div><div><div><div></div><div></div></div><div><div></div><div></div></div></div><div><div><div><div></div><div></div></div><div><div></div><div></div></div></div></div><div><div><div><div></div><div></div></div><div><div></div><div></div></div></div><div><div><div><div></div><div></div></div><div><div></div><div></div></div></div></div><div><div><div><div></div><div></div></div><div><div></div><div></div></div></div><div><div><div><div></div><div></div></div><div><div></div><div></div></div></div></div><div><div><div><div></div><div></div></div><div><div></div><div></div></div></div><div><div><div><div></div><div></div></div><div><div></div><div></div></div></div></div><div><div><div><div></div><div></div></div><div><div></div><div></div></div></div><div><div><div><div></div><div></div></div><div><div></div><div></div></div></div></div><div><div><div><div></div><div></div></div><div><div></div><div></div></div></div><div><div><div><div></div><div></div></div><div><div></div><div></div></div></div></div><div><div><div><div></div><div></div></div><div><div></div><div></div></div></div><div><div><div><div></div><div></div></div><div><div></div><div></div></div></div></div><div><div><div><div></div><div></div></div><div><div></div><div></div></div></div><div><div><div><div></div><div></div></div><div><div></div><div></div></div></div></div><div><div><div><div></div><div></div></div><div><div></div><div></div></div></div><div><div><div><div></div><div></div></div><div><div></div><div></div></div></div></div><div><div><div><div></div><div></div></div><div><div></div><div></div></div></div><div><div><div><div></div><div></div></div><div><div></div><div></div></div></div></div><div><div><div><div></div><div></div></div><div><div></div><div></div></div></div><div><div><div><div></div><div></div></div><div><div></div><div></div></div></div></div><div><div><div><div></div><div></div></div><div><div></div><div></div></div></div><div><div><div><div></div><div></div></div><div><div></div><div></div></div></div></div><div><div><div><div></div><div></div></div><div><div></div><div></div></div></div><div><div><div><div></div><div></div></div><div><div></div><div></div></div></div></div><div><div><div><div></div><div></div></div><div><div></div><div></div></div></div><div><div><div><div></div><div></div></div><div><div></div><div></div></div></div></div><div><div><div><div></div><div></div></div><div><div></div><div></div></div></div><div><div><div><div></div><div></div></div><div><div></div><div></div></div></div></div><div><div><div><div></div><div></div></div><div><div></div><div></div></div></div><div><div><div><div></div><div></div></div><div><div></div><div></div></div></div></div><div><div><div><div></div><div></div></div><div><div></div><div></div></div></div><div><div><div><div></div><div></div></div><div><div></div><div></div></div></div></div><div><div><div><div></div><div></div></div><div><div></div><div></div></div></div><div><div><div><div></div><div></div></div><div><div></div><div></div></div></div></div><div><div><div><div></div><div></div></div><div><div></div><div></div></div></div><div><div><div><div></div><div></div></div><div><div></div><div></div></div></div></div><div><div><div><div></div><div></div></div><div><div></div><div></div></div></div><div><div><div><div></div><div></div></div><div><div></div><div></div></div></div></div><div><div><div><div></div><div></div></div><div><div></div><div></div></div></div><div><div><div><div></div><div></div></div><div><div></div><div></div></div></div></div><div><div><div><div></div><div></div></div><div><div></div><div></div></div></div><div><div><div><div></div><div></div></div><div><div></div><div></div></div></div></div><div><div><div><div></div><div></div></div><div><div></div><div></div></div></div><div><div><div><div></div><div></div></div><div><div></div><div></div></div></div></div><div><div><div><div></div><div></div></div><div><div></div><div></div></div></div><div><div><div><div></div><div></div></div><div><div></div><div></div></div></div></div><div><div><div><div></div><div></div></div><div><div></div><div></div></div></div><div><div><div><div></div><div></div></div><div><div></div><div></div></div></div></div><div><div><div><div></div><div></div></div><div><div></div><div></div></div></div><div><div><div><div></div><div></div></div><div><div></div><div></div></div></div></div><div><div><div><div></div><div></div></div><div><div></div><div></div></div></div><div><div><div><div></div><div></div></div><div><div></div><div></div></div></div></div><div><div><div><div></div><div></div></div><div><div></div><div></div></div></div><div><div><div><div></div><div></div></div><div><div></div><div></div></div></div></div><div><div><div><div></div><div></div></div><div><div></div><div></div></div></div><div><div><div><div></div><div></div></div><div><div></div><div></div></div></div></div><div><div><div><div></div><div></div></div><div><div></div><div></div></div></div><div><div><div><div></div><div></div></div><div><div></div><div></div></div></div></div><div><div><div><div></div><div></div></div><div><div></div><div></div></div></div><div><div><div><div></div><div></div></div><div><div></div><div></div></div></div></div><div><div><div><div></div><div></div></div><div><div></div><div></div></div></div><div><div><div><div></div><div></div></div><div><div></div><div></div></div></div></div><div><div><div><div></div><div></div></div><div><div></div><div></div></div></div><div><div><div><div></div><div></div></div><div><div></div><div></div></div></div></div><div><div><div><div></div><div></div></div><div><div></div><div></div></div></div><div><div><div><div></div><div></div></div><div><div></div><div></div></div></div></div><div><div><div><div></div><div></div></div><div><div></div><div></div></div></div><div><div><div><div></div><div></div></div><div><div></div><div></div></div></div></div><div><div><div><div></div><div></div></div><div><div></div><div></div></div></div><div><div><div><div></div><div></div></div><div><div></div><div></div></div></div></div><div><div><div><div></div><div></div></div><div><div></div><div></div></div></div><div><div><div><div></div><div></div></div><div><div></div><div></div></div></div></div><div><div><div><div></div><div></div></div><div><div></div><div></div></div></div><div><div><div><div></div><div></div></div><div><div></div><div></div></div></div></div><div><div><div><div></div><div></div></div><div><div></div><div></div></div></div><div><div><div><div></div><div></div></div><div><div></div><div></div></div></div></div><div><div><div><div></div><div></div></div><div><div></div><div></div></div></div><div><div><div><div></div><div></div></div><div><div></div><div></div></div></div></div><div><div><div><div></div><div></div></div><div><div></div><div></div></div></div><div><div><div><div></div><div></div></div><div><div></div><div></div></div></div></div><div><div><div><div></div><div></div></div><div><div></div><div></div></div></div><div><div><div><div></div><div></div></div><div><div></div><div></div></div></div></div><div><div><div><div></div><div></div></div><div><div></div><div></div></div></div><div><div><div><div></div><div></div></div><div><div></div><div></div></div></div></div><div><div><div><div></div><div></div></div><div><div></div><div></div></div></div><div><div><div><div></div><div></div></div><div><div></div><div></div></div></div></div><div><div><div><div></div><div></div></div><div><div></div><div></div></div></div><div><div><div><div></div><div></div></div><div><div></div><div></div></div></div></div><div><div><div><div></div><div></div></div><div><div></div><div></div></div></div><div><div><div><div></</div></div></div></div></div></div></div></div></div></div></div></div></div></div></div></div></div></div></div></div></div></div></div></div></div></div></div></div></div></div></div></div></div></div></div></div></div></div></div></div></div></div></div></div></div></div></div></div></div></div></div></div></div></div></div></div></div></div></div></div></div></div></div></div></div></div></div></div></div></div></div></div></div></div></div></div></div>						

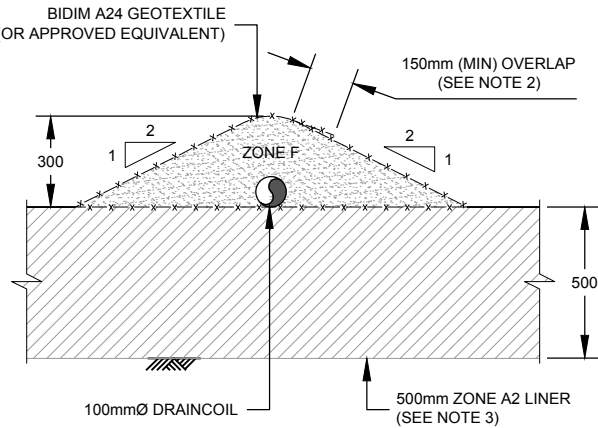


LEGEND:

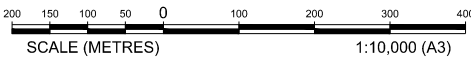
- EXCLUSION ZONE
- EXISTING DRAINAGE COURSE
- NORTHERN AREA LEASE BOUNDARY
- EXPLORATION LICENCE BOUNDARY
- EXISTING ROAD (UNSEALED)
- PROPOSED SERVICES CORRIDOR
- EMBANKMENT TOE DRAIN
- FINGER DRAIN

NOTES:

- 1m CONTOUR INTERVALS SHOWN. TOPOGRAPHIC INFORMATION DERIVED FROM 1 SECOND SRTM DATA, OBTAINED FROM GEOSCIENCE AUSTRALIA, (2011).
- ALL GEOTEXTILE USED TO WRAP FINGER DRAINS SHALL BE CONTINUOUSLY GLUED USING APPROVED SEALANT.
- LOW PERMEABILITY SOIL LINER (ZONE A2) IN TSF BASIN AREA AS FOLLOWS:
 - WHERE IN-SITU MATERIAL IS SUITABLE AS SOIL LINER:
 - RE-WORK TO COMPACT TO 500mm DEPTH.
 - WHERE IN-SITU MATERIAL IS UNSUITABLE AS SOIL LINER:
 - 500mm IMPORTED LOW PERMEABILITY LINER.



SECTION A - TYPICAL FINGER DRAIN
SCALE 1:25



SHEET SIZE A3	REFERENCES	DRAWING No.	DRAWING TITLE	REV	DATE	DESCRIPTION	DRN	CKD	DESIGN	APP	CLIENT APP
287	801-140-C201-028	FTSF UNDERDRAINAGE SUMP DETAILS	A	11/12/2013	ISSUED FOR ENGINEERING COST STUDY	PRK	PLV	PDM	GHC		
	801-140-C201-031	FTSF DECANT SECTIONS & DETAILS-SHEET 1									
	801-140-C201-033	FTSF DECANT SECTIONS & DETAILS-SHEET 3									

ORIGINAL STAMPED IN RED

Knight Piésold CONSULTING

ARAFURA RESOURCES LIMITED
NOLANS PROJECT
FLOTATION TAILINGS STORAGE FACILITY
UNDERDRAINAGE LAYOUT

DATE	CHECKED	DESIGNED	APPROVED	CLIENT APP'D

THIRD ANGLE PROJECTION

NOTICE: This drawing has not been publicly disclosed and is the sole property of Knight Piésold Pty Ltd and is lent to the borrower for their confidential use only, and in consideration of the loan of this drawing, the borrower promises and agrees to return it upon request and agrees that it shall not be reproduced, copied, lent or otherwise disposed of directly or indirectly to any other person or entity, nor used for any purpose other than for which it is furnished.

SCALE 1:10,000

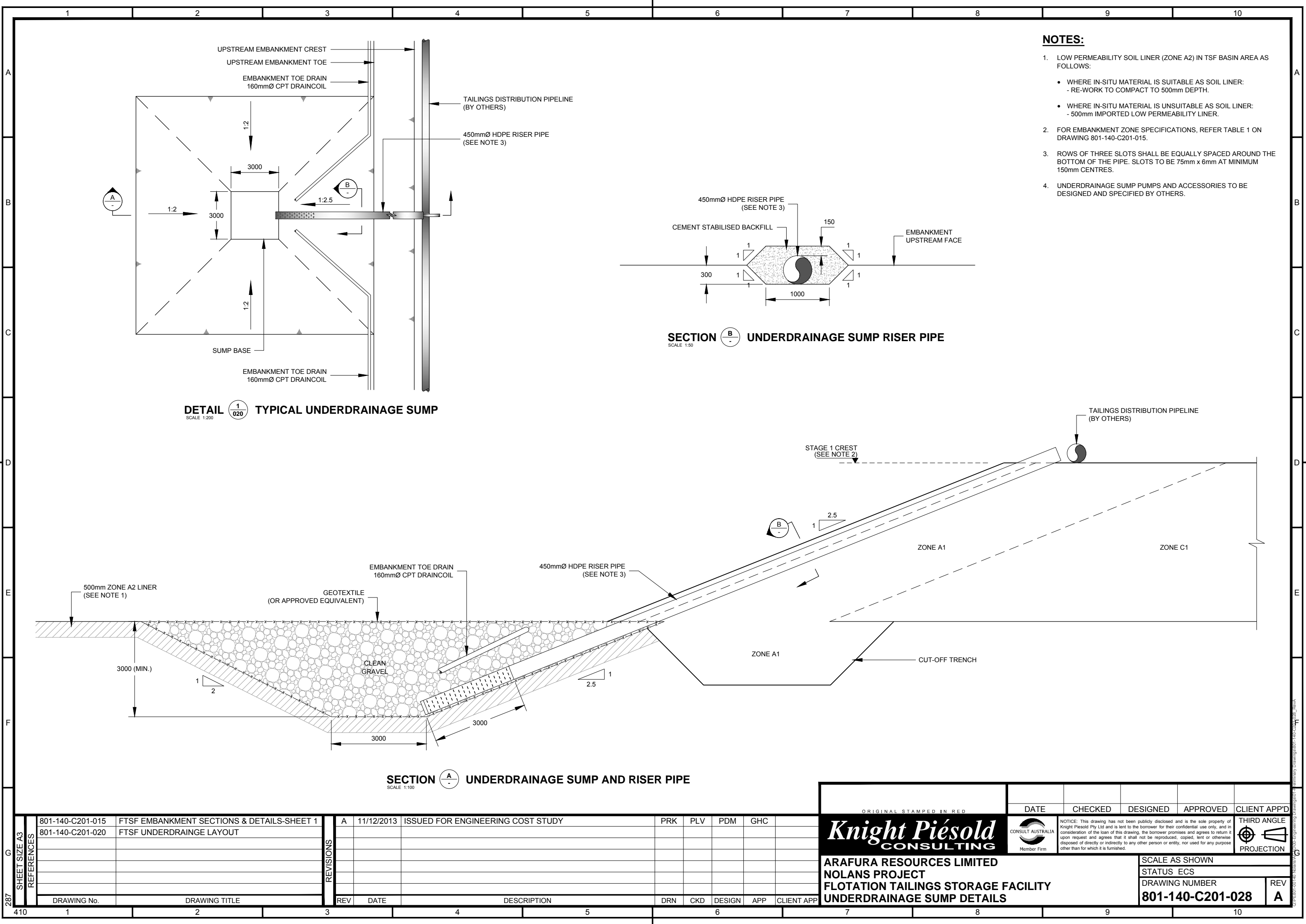
STATUS ECS

DRAWING NUMBER

801-140-C201-020

REV

A



NOTES:

1. LOW PERMEABILITY SOIL LINER (ZONE A2) IN TSF BASIN AREA AS FOLLOWS:
 - WHERE IN-SITU MATERIAL IS SUITABLE AS SOIL LINER:
 - RE-WORK TO COMPACT TO 500mm DEPTH.
 - WHERE IN-SITU MATERIAL IS UNSUITABLE AS SOIL LINER:
 - 500mm IMPORTED LOW PERMEABILITY LINER.
2. FOR EMBANKMENT ZONE SPECIFICATIONS, REFER TABLE 1 ON DRAWING 801-140-C201-015.
3. ROWS OF THREE SLOTS SHALL BE EQUALLY SPACED AROUND THE BOTTOM OF THE PIPE. SLOTS TO BE 75mm x 6mm AT MINIMUM 150mm CENTRES.
4. UNDERDRAINAGE SUMP PUMPS AND ACCESSORIES TO BE DESIGNED AND SPECIFIED BY OTHERS.

287
SHEET SIZE A3

REFERENCES	801-140-C201-015	FTSF EMBANKMENT SECTIONS & DETAILS-SHEET 1
	801-140-C201-020	FTSF UNDERDRAINAGE LAYOUT
DRAWING No.	DRAWING TITLE	

REV	DATE	DESCRIPTION	DRN	CKD	DESIGN	APP	CLIENT APP
A	11/12/2013	ISSUED FOR ENGINEERING COST STUDY	PRK	PLV	PDM	GHC	

ORIGINAL STAMPED IN RED

Knight Piésold
CONSULTING

ARAFURA RESOURCES LIMITED
NOLANS PROJECT
FLOTATION TAILINGS STORAGE FACILITY
UNDERDRAINAGE SUMP DETAILS

DATE	CHECKED	DESIGNED	APPROVED	CLIENT APP'D

THIRD ANGLE
PROJECTION

NOTICE: This drawing has not been publicly disclosed and is the sole property of Knight Piésold Pty Ltd and is lent to the borrower for their confidential use only, and in consideration of the loan of this drawing, the borrower promises and agrees to return it upon request and agrees that it shall not be reproduced, copied, lent or otherwise disposed of directly or indirectly to any other person or entity, nor used for any purpose other than for which it is furnished.

SCALE AS SHOWN

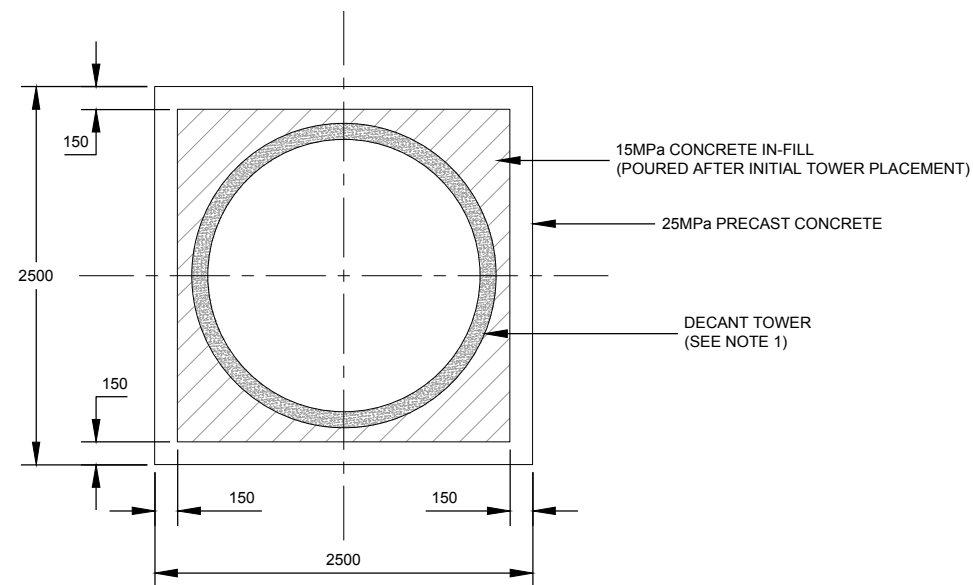
STATUS ECS

DRAWING NUMBER

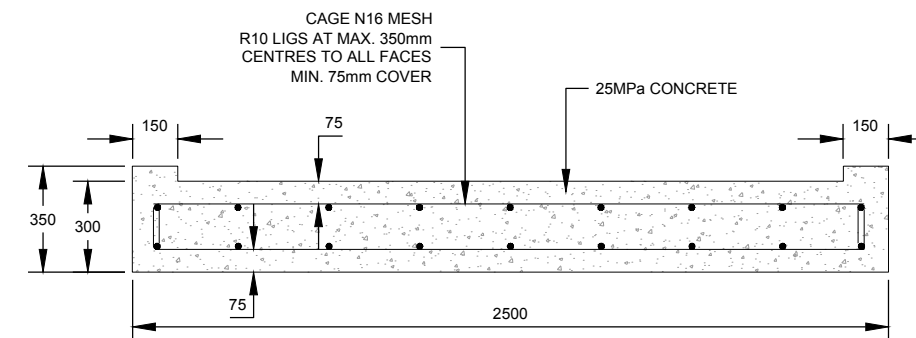
801-140-C201-028

REV

A



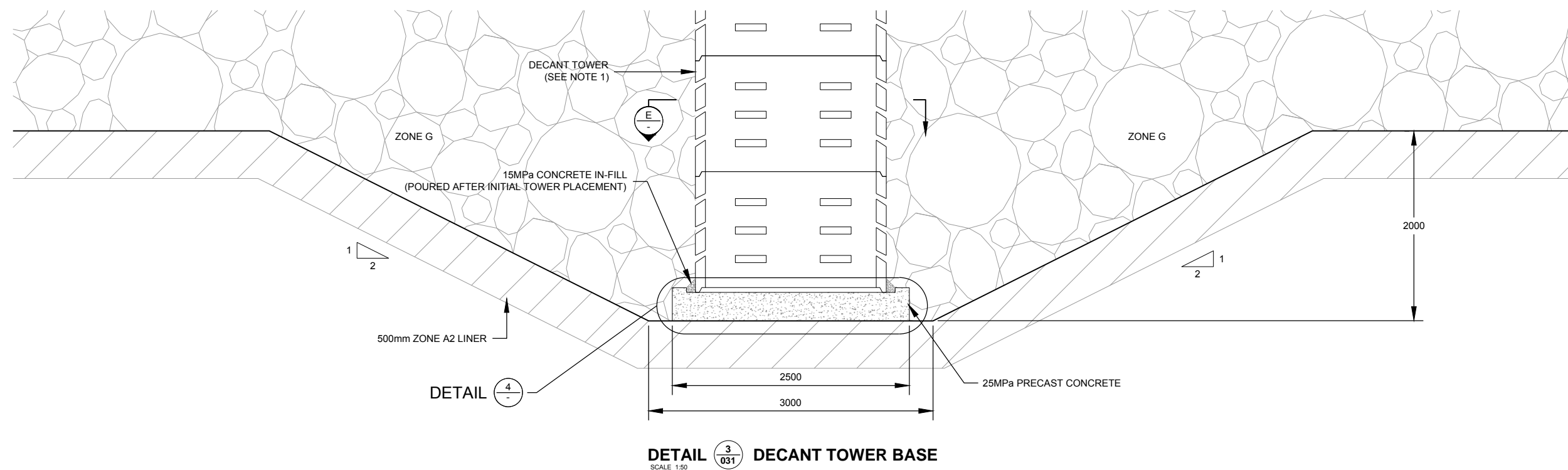
SECTION  **DECANT TOWER BASE**
SCALE 1:50



DETAIL  **DECANT TOWER BASE SLAB**
SCALE 1:25

NOTES:

1. DECANT TOWER CONSTRUCTED OF 1800mmØ PRECAST CONCRETE PIPE SECTIONS, WITH 400mm x 50mm SLOTS, 6 SLOTS PER ROW, ROWS AT 300mm CENTRES.
2. PUMP, CONTROLS AND PIPEWORK TO BE DESIGNED AND SPECIFIED BY OTHERS.
3. FOR EMBANKMENT ZONE SPECIFICATIONS, REFER TABLE 1 ON DRAWING 801-140-C201-015.



DETAIL  **DECANT TOWER BASE**
SCALE 1:50

SHEET SIZE A3 REFERENCES	801-140-C201-015	EMBANKMENT SECTIONS & DETAILS-SHEET 1	A	11/12/2013	ISSUED FOR ENGINEERING COST STUDY	PRK	PLV	PDM	GHC	
	801-140-C201-031	DECANT SECTIONS & DETAILS-SHEET 1								
	801-140-C201-033	DECANT SECTIONS & DETAILS-SHEET 3								
DRAWING No.	DRAWING TITLE		REV	DATE	DESCRIPTION	DRN	CKD	DESIGN	APP	CLIENT APP
1	2	3	4	5	6	7	8	9	10	

DRAFT
ORIGINAL STAMPED IN RED

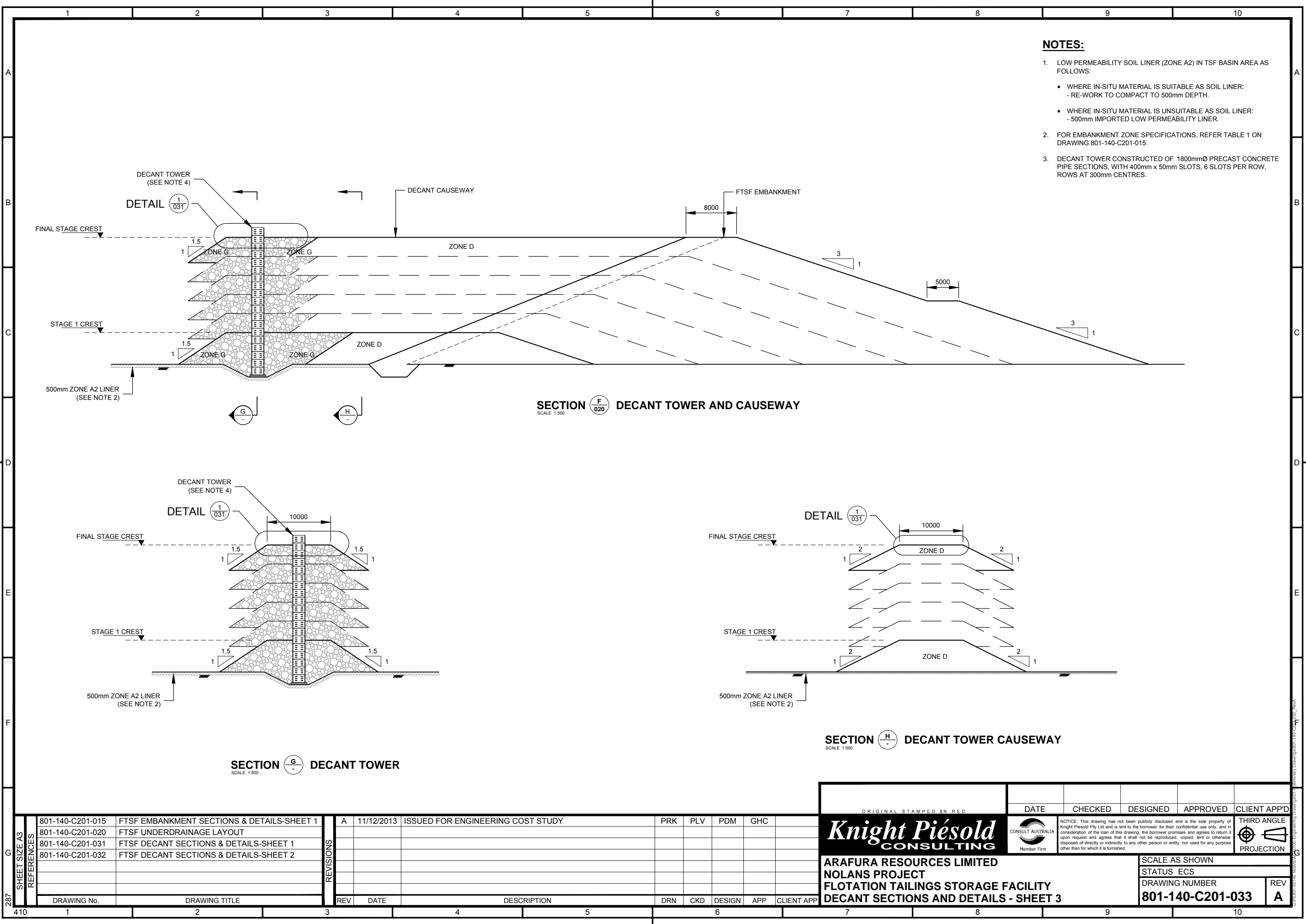
Knight Piesold CONSULTING

ARAFURA RESOURCES LIMITED
NOLANS PROJECT
FLOTATION TAILINGS STORAGE FACILITY
DECANT SECTIONS AND DETAILS - SHEET 2

SCALE AS SHOWN
STATUS ECS
DRAWING NUMBER
801-140-C201-032

THIRD ANGLE PROJECTION

REV
A



NOTES:

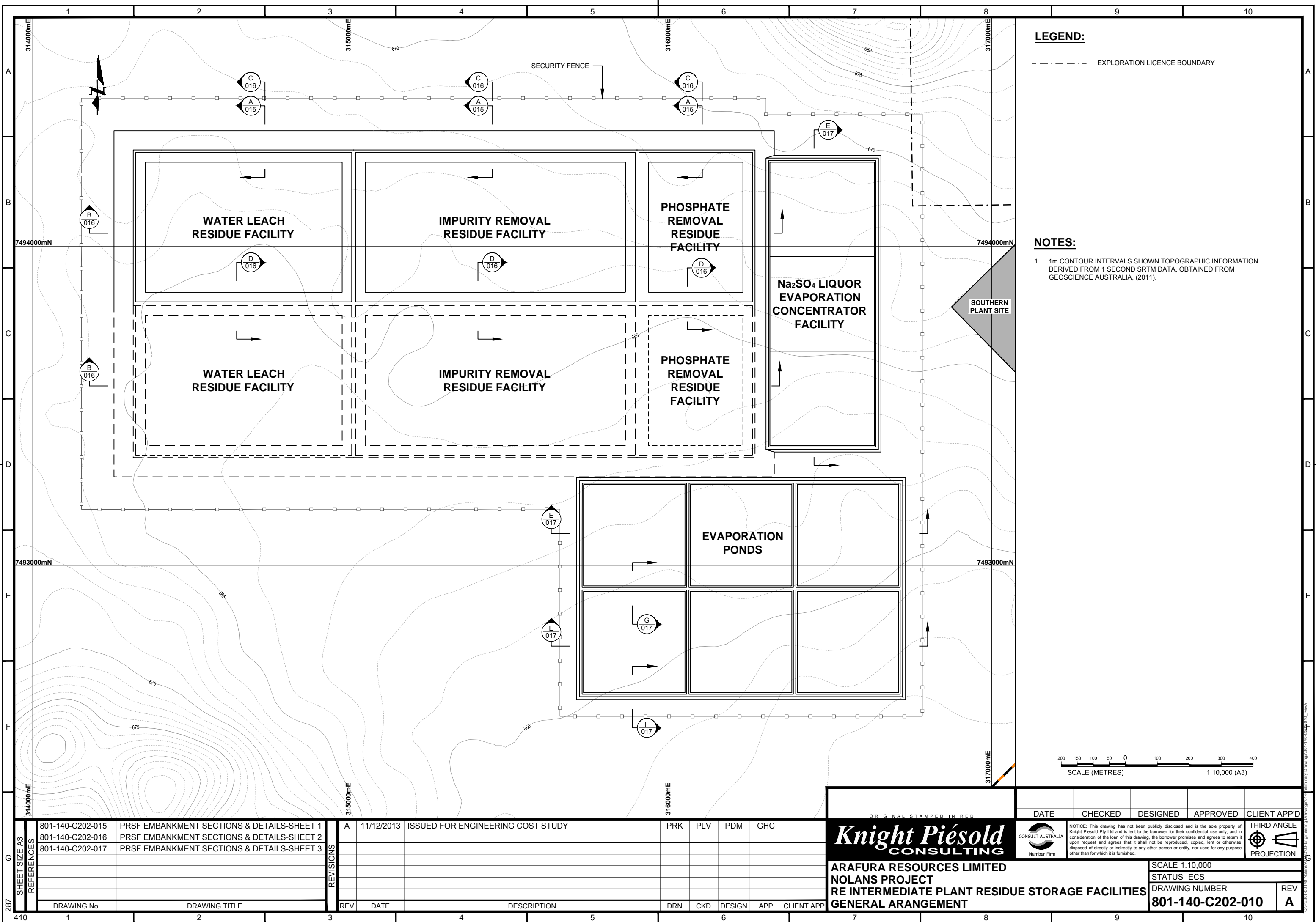
- 1. LOW PERMEABILITY SOIL LINER (ZONE A2) IN TSF BASIN AREA AS FOLLOWS:
 - WHERE IN-SITU MATERIAL IS SUITABLE AS SOIL LINER:
 - RE-WORK TO COMPACT TO 500mm DEPTH.
 - WHERE IN-SITU MATERIAL IS UNSUITABLE AS SOIL LINER:
 - 500mm IMPORTED LOW PERMEABILITY LINER.
- 2. FOR EMBANKMENT ZONE SPECIFICATIONS, REFER TABLE 1 ON DRAWING 801-140-C201-015.
- 3. DECANT TOWER CONSTRUCTED OF 1800mmØ PRECAST CONCRETE PIPE SECTIONS, WITH 400mm x 50mm SLOTS, 6 SLOTS PER ROW, ROWS AT 300mm CENTRES.

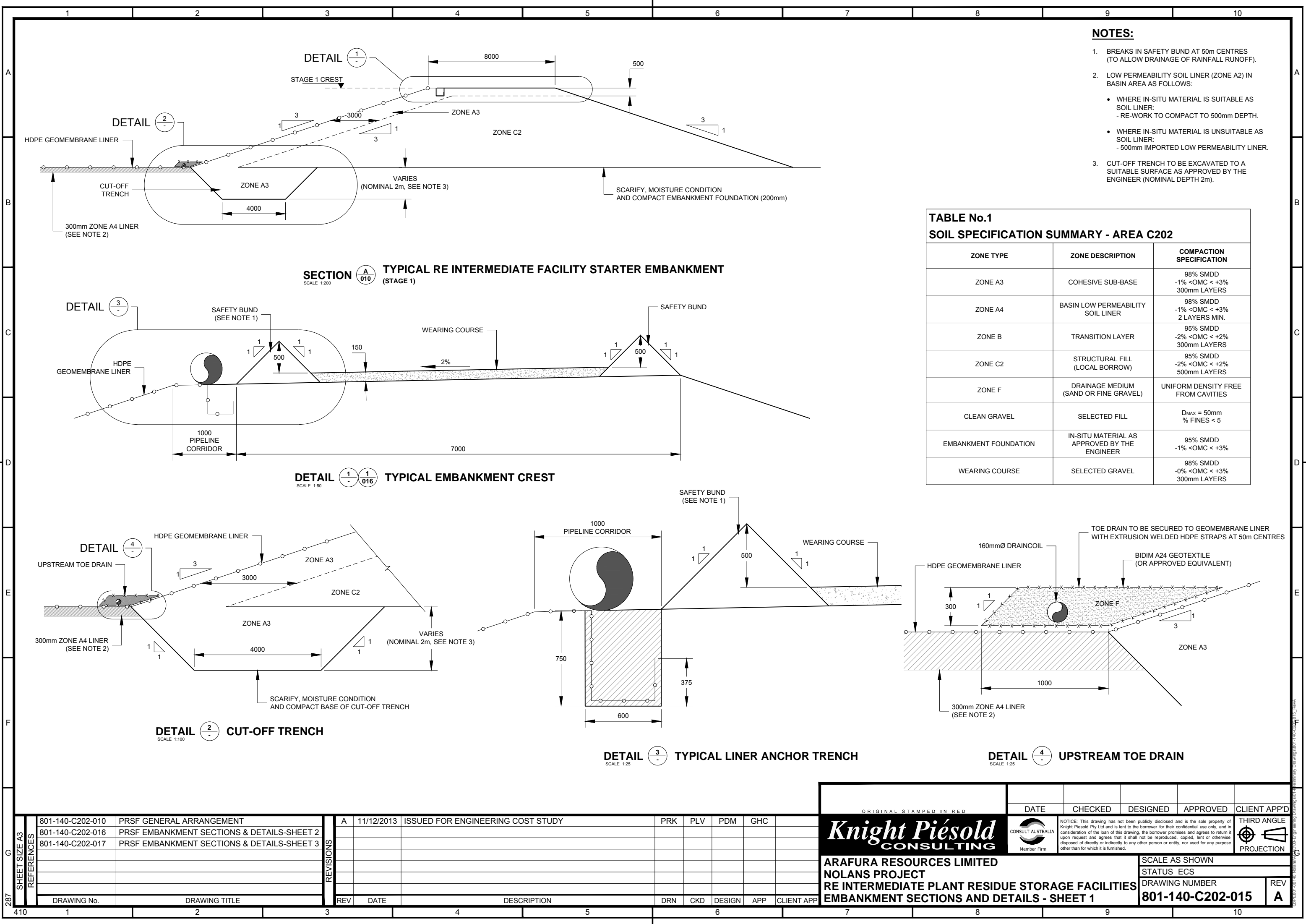
SECTION F-020 DECANT TOWER AND CAUSEWAY
SCALE 1:500

SECTION G-020 DECANT TOWER
SCALE 1:500

SECTION H-020 DECANT TOWER CAUSEWAY
SCALE 1:500

287 SHEET SIZE A3	REFERENCES	801-140-C201-015	FTSF EMBANKMENT SECTIONS & DETAILS-SHEET 1	REV	DATE	DESCRIPTION	DRN	CKD	DESIGN	APP	CLIENT APP	ORIGINAL STAMPED IN RED				DATE	CHECKED	DESIGNED	APPROVED	CLIENT APP'D		
		801-140-C201-020	FTSF UNDERDRAINAGE LAYOUT									Knight Piésold CONSULTING				CONSULT AUSTRALIA Member Firm	NOTICE: This drawing has not been publicly disclosed and is the sole property of Knight Piésold Pty Ltd and is lent to the borrower for their confidential use only, and in consideration of the loan of this drawing, the borrower promises and agrees to return it upon request and agrees that it shall not be reproduced, copied, lent or otherwise disposed of directly or indirectly to any other person or entity, nor used for any purpose other than for which it is furnished.				THIRD ANGLE PROJECTION	
		801-140-C201-031	FTSF DECANT SECTIONS & DETAILS-SHEET 1									ARAFURA RESOURCES LIMITED					SCALE AS SHOWN					
		801-140-C201-032	FTSF DECANT SECTIONS & DETAILS-SHEET 2									NOLANS PROJECT					STATUS ECS					
												DRAWING NUMBER					REV					
												DECANT SECTIONS AND DETAILS - SHEET 3					801-140-C201-033					A
410	1	2	3	4	5	6	7	8	9	10												





NOTES:

- BREAKS IN SAFETY BUND AT 50m CENTRES (TO ALLOW DRAINAGE OF RAINFALL RUNOFF).
- LOW PERMEABILITY SOIL LINER (ZONE A2) IN BASIN AREA AS FOLLOWS:
 - WHERE IN-SITU MATERIAL IS SUITABLE AS SOIL LINER:
 - RE-WORK TO COMPACT TO 500mm DEPTH.
 - WHERE IN-SITU MATERIAL IS UNSUITABLE AS SOIL LINER:
 - 500mm IMPORTED LOW PERMEABILITY LINER.
- CUT-OFF TRENCH TO BE EXCAVATED TO A SUITABLE SURFACE AS APPROVED BY THE ENGINEER (NOMINAL DEPTH 2m).

TABLE No.1
SOIL SPECIFICATION SUMMARY - AREA C202

ZONE TYPE	ZONE DESCRIPTION	COMPACTION SPECIFICATION
ZONE A3	COHESIVE SUB-BASE	98% SMDD -1% <OMC < +3% 300mm LAYERS
ZONE A4	BASIN LOW PERMEABILITY SOIL LINER	98% SMDD -1% <OMC < +3% 2 LAYERS MIN.
ZONE B	TRANSITION LAYER	95% SMDD -2% <OMC < +2% 300mm LAYERS
ZONE C2	STRUCTURAL FILL (LOCAL BORROW)	95% SMDD -2% <OMC < +2% 500mm LAYERS
ZONE F	DRAINAGE MEDIUM (SAND OR FINE GRAVEL)	UNIFORM DENSITY FREE FROM CAVITIES
CLEAN GRAVEL	SELECTED FILL	D _{MAX} = 50mm % FINES < 5
EMBANKMENT FOUNDATION	IN-SITU MATERIAL AS APPROVED BY THE ENGINEER	95% SMDD -1% <OMC < +3%
WEARING COURSE	SELECTED GRAVEL	98% SMDD -0% <OMC < +3% 300mm LAYERS

SHEET SIZE A3

REV	DATE	DESCRIPTION	DRN	CKD	DESIGN	APP	CLIENT APP
1	11/12/2013	ISSUED FOR ENGINEERING COST STUDY	PRK	PLV	PDM	GHC	

REV	DATE	DESCRIPTION	DRN	CKD	DESIGN	APP	CLIENT APP
1	11/12/2013	ISSUED FOR ENGINEERING COST STUDY	PRK	PLV	PDM	GHC	

ORIGINAL STAMPED IN RED

Knight Piésold
CONSULTING

ARAFURA RESOURCES LIMITED
NOLANS PROJECT
RE INTERMEDIATE PLANT RESIDUE STORAGE FACILITIES
EMBANKMENT SECTIONS AND DETAILS - SHEET 1

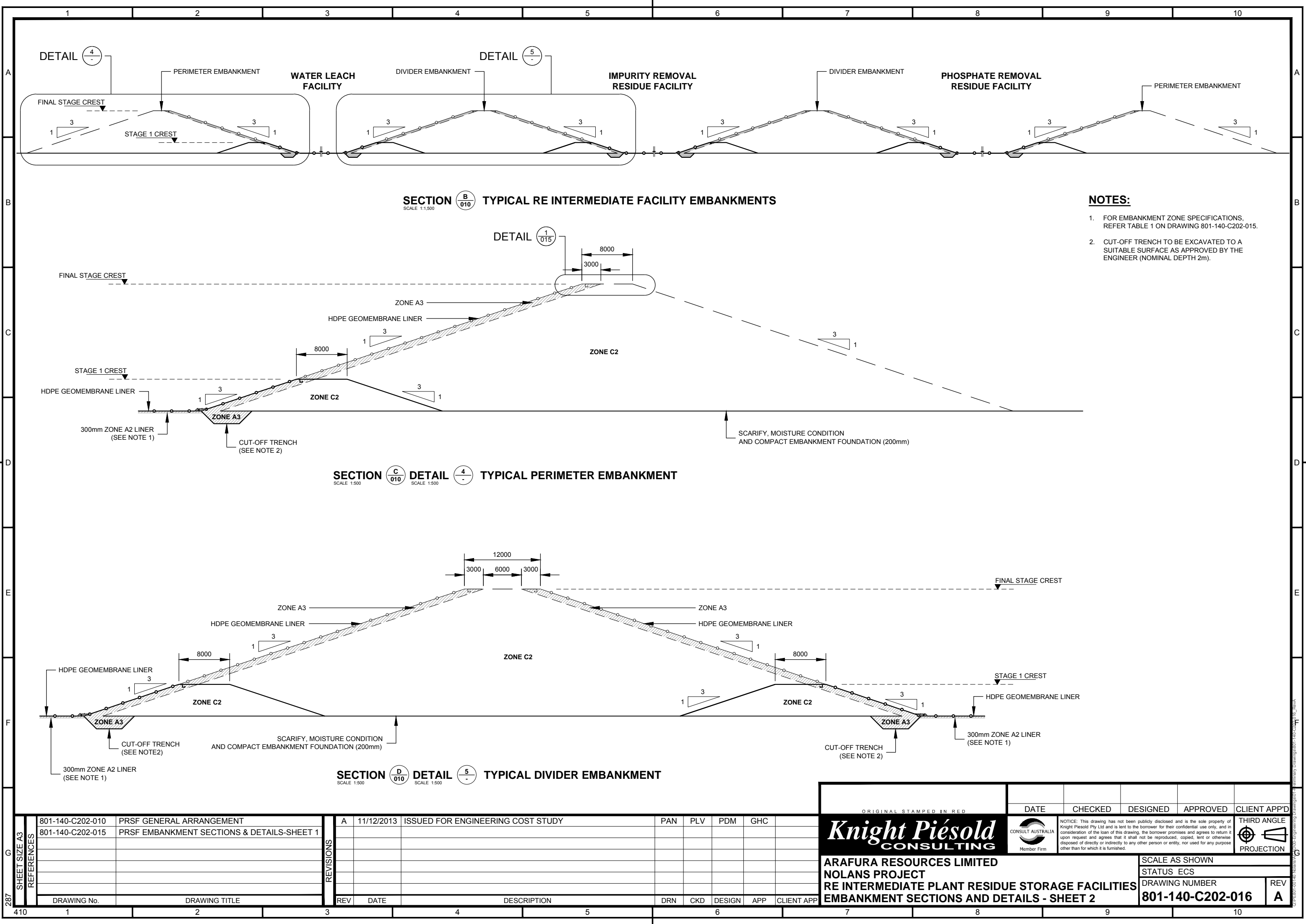
DATE	CHECKED	DESIGNED	APPROVED	CLIENT APP'D

CONSULT AUSTRALIA
Member Firm

NOTICE: This drawing has not been publicly disclosed and is the sole property of Knight Piésold Pty Ltd and is lent to the borrower for their confidential use only, and in consideration of the loan of this drawing, the borrower promises and agrees to return it upon request and agrees that it shall not be reproduced, copied, lent or otherwise disposed of directly or indirectly to any other person or entity, nor used for any purpose other than for which it is furnished.

THIRD ANGLE
PROJECTION

SCALE AS SHOWN
STATUS ECS
DRAWING NUMBER
801-140-C202-015
REV
A



- NOTES:**
- 1. FOR EMBANKMENT ZONE SPECIFICATIONS, REFER TABLE 1 ON DRAWING 801-140-C202-015.
 - 2. CUT-OFF TRENCH TO BE EXCAVATED TO A SUITABLE SURFACE AS APPROVED BY THE ENGINEER (NOMINAL DEPTH 2m).

SHEET SIZE A3 REFERENCES	801-140-C202-010	PRSF GENERAL ARRANGEMENT	REVISONS	A	11/12/2013	ISSUED FOR ENGINEERING COST STUDY	PAN	PLV	PDM	GHC	
	801-140-C202-015	PRSF EMBANKMENT SECTIONS & DETAILS-SHEET 1									
	DRAWING No.	DRAWING TITLE	REV	DATE	DESCRIPTION		DRN	CKD	DESIGN	APP	CLIENT APP

ORIGINAL STAMPED IN RED

Knight Piesold
CONSULTING

ARAFURA RESOURCES LIMITED
NOLANS PROJECT
RE INTERMEDIATE PLANT RESIDUE STORAGE FACILITIES
EMBANKMENT SECTIONS AND DETAILS - SHEET 2

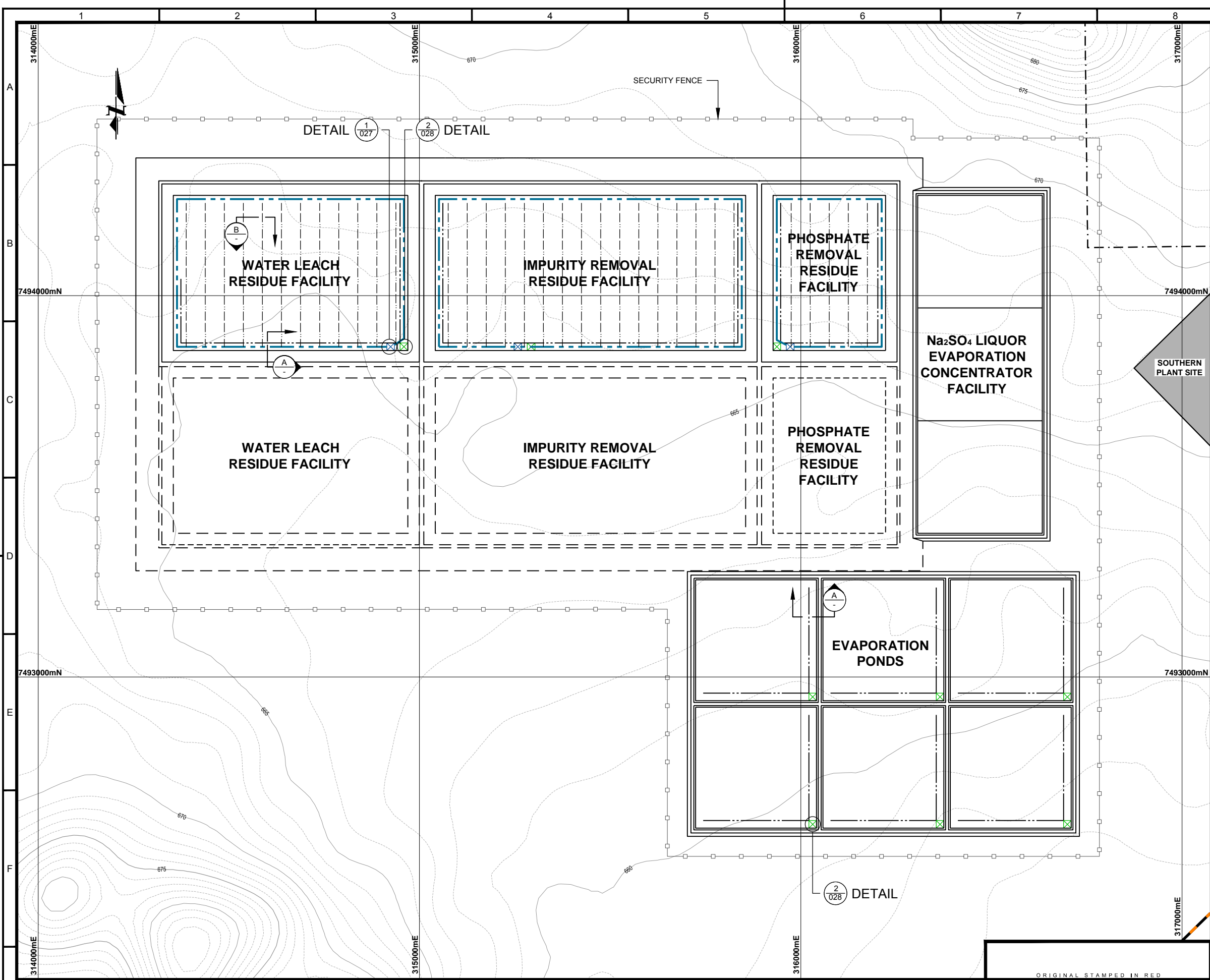
DATE	CHECKED	DESIGNED	APPROVED	CLIENT APP'D

CONSULT AUSTRALIA
Member Firm

NOTICE: This drawing has not been publicly disclosed and is the sole property of Knight Piesold Pty Ltd and is lent to the borrower for their confidential use only, and in consideration of the loan of this drawing, the borrower promises and agrees to return it upon request and agrees that it shall not be reproduced, copied, lent or otherwise disposed of directly or indirectly to any other person or entity, nor used for any purpose other than for which it is furnished.

THIRD ANGLE
PROJECTION

SCALE AS SHOWN
STATUS ECS
DRAWING NUMBER
801-140-C202-016
REV
A

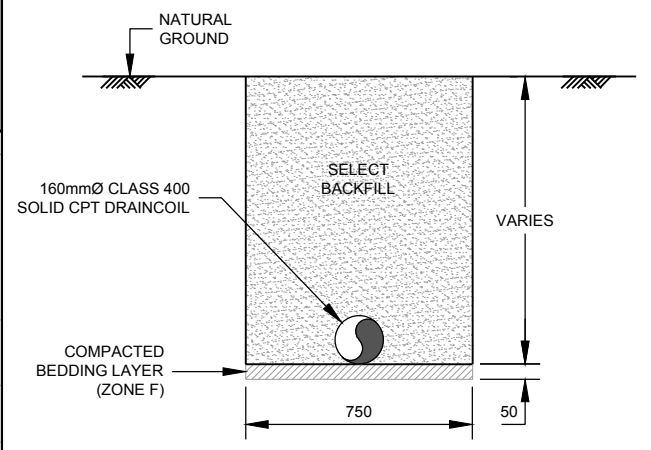


LEGEND:

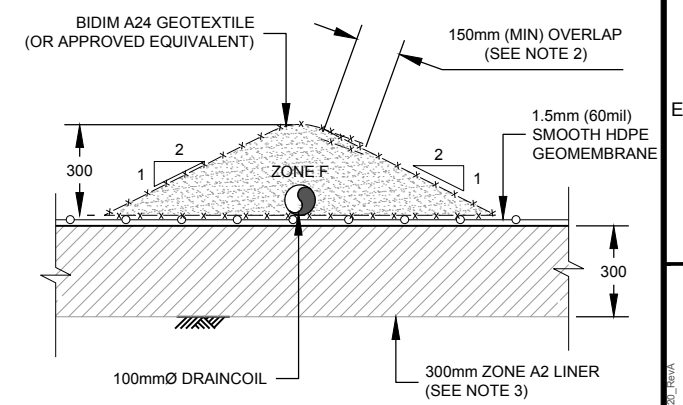
- EXPLORATION LICENCE BOUNDARY
- LCRS DRAIN PIPE
- TOE DRAIN
- FINGER DRAIN
- UNDERDRAINAGE SUMP
- LCRS SUMP

NOTES:

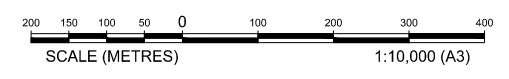
- 1m CONTOUR INTERVALS SHOWN. TOPOGRAPHIC INFORMATION DERIVED FROM 1 SECOND SRTM DATA, OBTAINED FROM GEOSCIENCE AUSTRALIA, (2011).
- ALL GEOTEXTILE USED TO WRAP FINGER DRAINS SHALL BE CONTINUOUSLY GLUED USING APPROVED SEALANT.
- LOW PERMEABILITY SOIL LINER (ZONE A2) IN BASIN AREA AS FOLLOWS:
 - WHERE IN-SITU MATERIAL IS SUITABLE AS SOIL LINER:
 - RE-WORK TO COMPACT TO 500mm DEPTH.
 - WHERE IN-SITU MATERIAL IS UNSUITABLE AS SOIL LINER:
 - 500mm IMPORTED LOW PERMEABILITY LINER.



SECTION A TYPICAL LCRS COLLECTOR DRAIN
SCALE 1:25



SECTION B TYPICAL FINGER DRAIN
SCALE 1:25



SHEET SIZE A3	REFERENCES	
	DRAWING No.	DRAWING TITLE
801-140-C202-022	PRSF UNDERDRAINAGE SECTIONS & DETAILS	
801-140-C202-027	PRSF LCRS SUMP DETAILS	
801-140-C202-028	PRSF UNDERDRAINAGE SUMP DETAILS	

REV	DATE	DESCRIPTION	DRN	CKD	DESIGN	APP	CLIENT APP
1	11/12/2013	ISSUED FOR ENGINEERING COST STUDY	PRK	PLV	PDM	GHC	

ORIGINAL STAMPED IN RED

Knight Piésold CONSULTING

ARAFURA RESOURCES LIMITED
NOLANS PROJECT
RE INTERMEDIATE PLANT RESIDUE STORAGE FACILITIES
UNDERDRAINAGE LAYOUT

DATE	CHECKED	DESIGNED	APPROVED	CLIENT APP'D

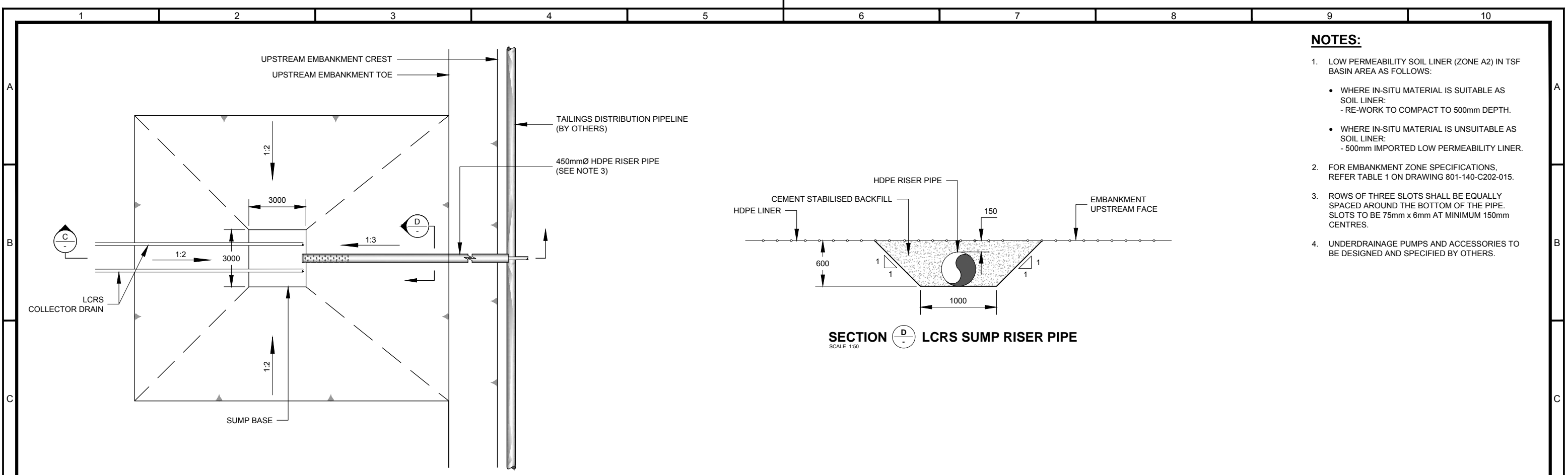
THIRD ANGLE PROJECTION

SCALE 1:10,000

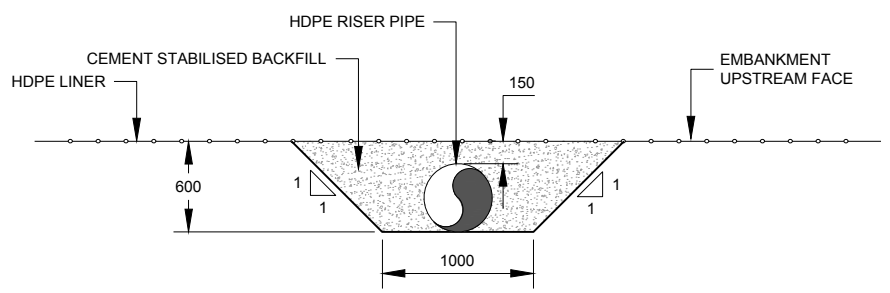
STATUS ECS

DRAWING NUMBER 801-140-C202-020

REV A



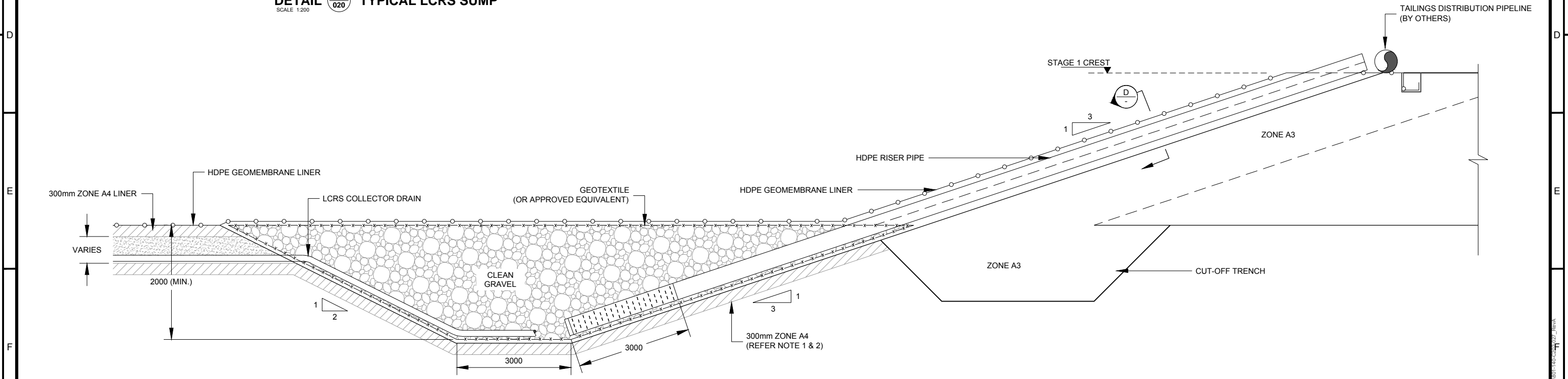
DETAIL 1/020 TYPICAL LCRS SUMP
SCALE 1:200



SECTION D LCRS SUMP RISER PIPE
SCALE 1:50

NOTES:

1. LOW PERMEABILITY SOIL LINER (ZONE A2) IN TSF BASIN AREA AS FOLLOWS:
 - WHERE IN-SITU MATERIAL IS SUITABLE AS SOIL LINER:
 - RE-WORK TO COMPACT TO 500mm DEPTH.
 - WHERE IN-SITU MATERIAL IS UNSUITABLE AS SOIL LINER:
 - 500mm IMPORTED LOW PERMEABILITY LINER.
2. FOR EMBANKMENT ZONE SPECIFICATIONS, REFER TABLE 1 ON DRAWING 801-140-C202-015.
3. ROWS OF THREE SLOTS SHALL BE EQUALLY SPACED AROUND THE BOTTOM OF THE PIPE. SLOTS TO BE 75mm x 6mm AT MINIMUM 150mm CENTRES.
4. UNDERDRAINAGE PUMPS AND ACCESSORIES TO BE DESIGNED AND SPECIFIED BY OTHERS.



SECTION C LCRS SUMP AND RISER PIPE
SCALE 1:100

287	G	SHEET SIZE A3	REFERENCES	801-140-C202-020	PRSF UNDERDRAINAGE LAYOUT	REVISIONS	A	11/12/2013	ISSUED FOR ENGINEERING COST STUDY	PRK	PLV	PDM	GHC	
					DRAWING No.	DRAWING TITLE		REV	DATE	DESCRIPTION	DRN	CKD	DESIGN	APP

ORIGINAL STAMPED IN RED

Knight Piesold
CONSULTING

CONSULT AUSTRALIA
Member Firm

NOTICE: This drawing has not been publicly disclosed and is the sole property of Knight Piesold Pty Ltd and is lent to the borrower for their confidential use only, and in consideration of the loan of this drawing, the borrower promises and agrees to return it upon request and agrees that it shall not be reproduced, copied, lent or otherwise disposed of directly or indirectly to any other person or entity, nor used for any purpose other than for which it is furnished.

THIRD ANGLE
PROJECTION

DATE

CHECKED

DESIGNED

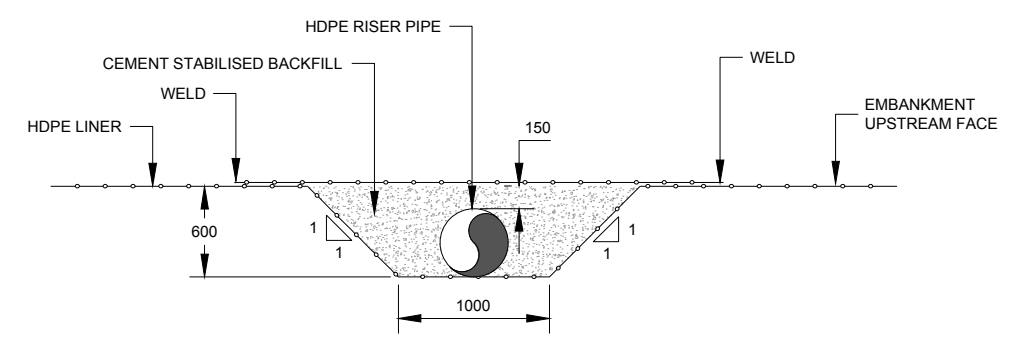
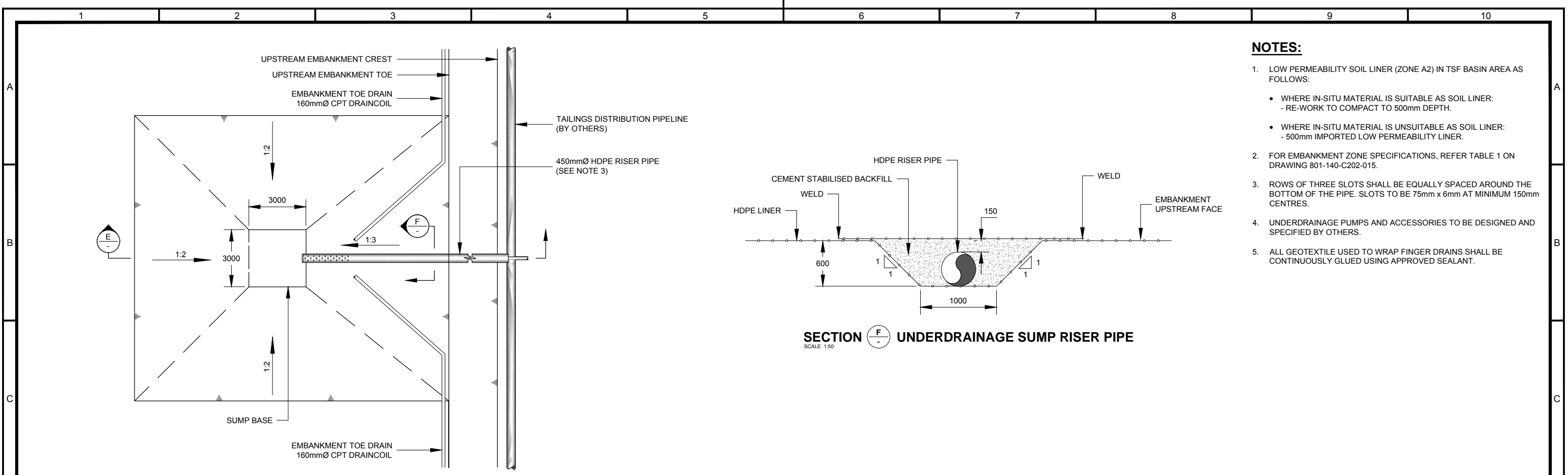
APPROVED

CLIENT APP'D

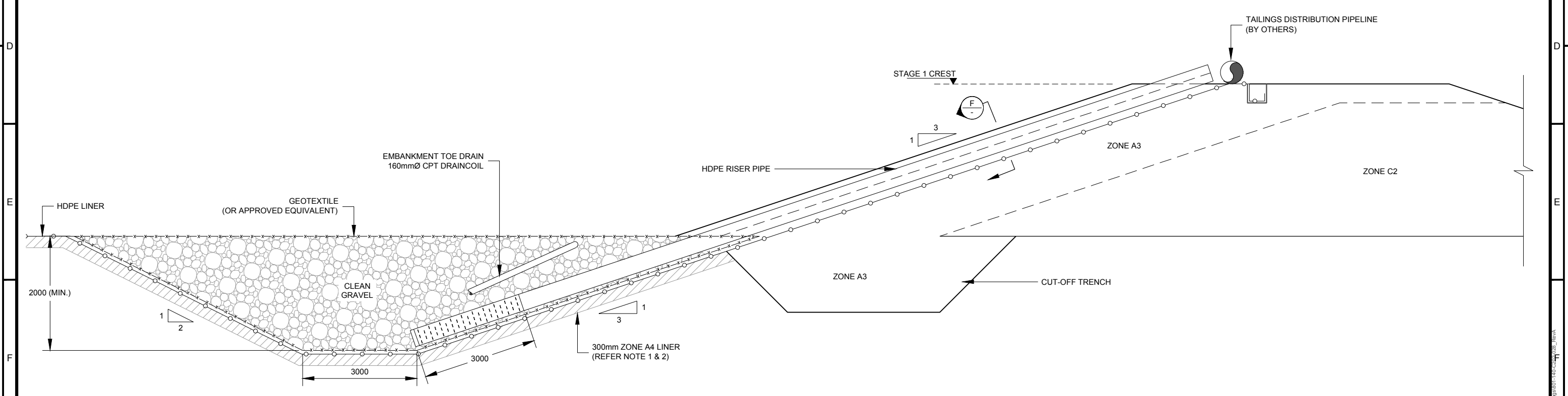
ARAFURA RESOURCES LIMITED
NOLANS PROJECT
RE INTERMEDIATE PLANT RESIDUE STORAGE FACILITIES
LCRS SUMP DETAILS

SCALE AS SHOWN
STATUS ECS
DRAWING NUMBER
801-140-C202-027

REV
A



- NOTES:**
1. LOW PERMEABILITY SOIL LINER (ZONE A2) IN TSF BASIN AREA AS FOLLOWS:
 - WHERE IN-SITU MATERIAL IS SUITABLE AS SOIL LINER:
 - RE-WORK TO COMPACT TO 500mm DEPTH.
 - WHERE IN-SITU MATERIAL IS UNSUITABLE AS SOIL LINER:
 - 500mm IMPORTED LOW PERMEABILITY LINER.
 2. FOR EMBANKMENT ZONE SPECIFICATIONS, REFER TABLE 1 ON DRAWING 801-140-C202-015.
 3. ROWS OF THREE SLOTS SHALL BE EQUALLY SPACED AROUND THE BOTTOM OF THE PIPE. SLOTS TO BE 75mm x 6mm AT MINIMUM 150mm CENTRES.
 4. UNDERDRAINAGE PUMPS AND ACCESSORIES TO BE DESIGNED AND SPECIFIED BY OTHERS.
 5. ALL GEOTEXTILE USED TO WRAP FINGER DRAINS SHALL BE CONTINUOUSLY GLUED USING APPROVED SEALANT.



SECTION E-E UNDERDRAINAGE SUMP AND RISER PIPE
SCALE 1:100

ORIGINAL STAMPED IN RED		DATE	CHECKED	DESIGNED	APPROVED	CLIENT APP'D
Knight Piésold CONSULTING		CONSULT AUSTRALIA Member Firm	NOTICE: This drawing has not been publicly disclosed and is the sole property of Knight Piésold Pty Ltd and is lent to the borrower for their confidential use only, and in consideration of the loan of this drawing, the borrower promises and agrees to return it upon request and agrees that it shall not be reproduced, copied, lent or otherwise disposed of directly or indirectly to any other person or entity, nor used for any purpose other than for which it is furnished.			
ARAFURA RESOURCES LIMITED NOLANS PROJECT RE INTERMEDIATE PLANT RESIDUE STORAGE FACILITIES UNDERDRAINAGE SUMP DETAILS		SCALE AS SHOWN STATUS ECS DRAWING NUMBER 801-140-C202-028				REV A
REFERENCES		REVISIONS		THIRD ANGLE PROJECTION		
801-140-C202-020 PRSF UNDERDRAINAGE LAYOUT		A 11/12/2013 ISSUED FOR ENGINEERING COST STUDY		PRK PLV PDM GHC		
DRAWING No.		DRAWING TITLE		REV DATE DESCRIPTION		
1		2		4		
3		4		5		
6		7		8		
9		10		11		