

Nolans Project Induction

June 2023



Induction Summary

Nolans Project | Alice Springs



1

Our Vision & Values

2

Project Overview

3

Site Overview

4

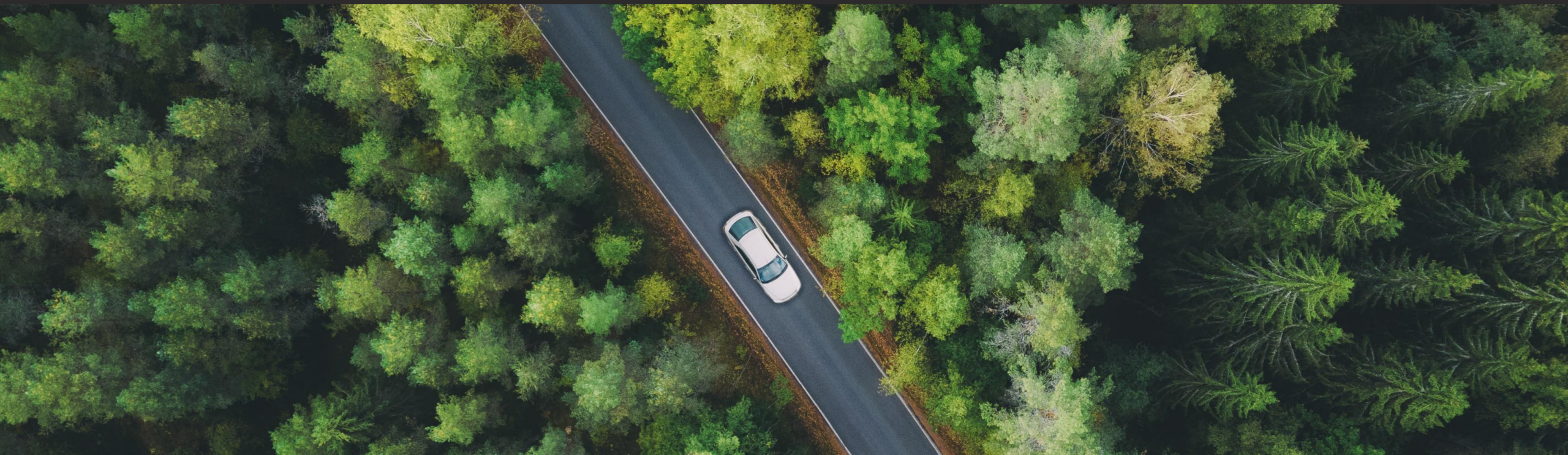
Health and Safety

5

Environment

Our Vision

“ To be the trusted, leading rare earths partner of customers in high impact technologies and enduringly lift the sustainability of our planet. ”



Our Values



We are ethical and accountable

We are guided by our moral compass and own our decisions.

We strongly believe in a sustainable future and our actions are guided by this.



We are resilient and innovative

We encourage agile thinking and innovative ideas to find solutions.

We are resilient and adaptive to the changing landscape of the industry.



We are committed to our purpose and stakeholders

We are a high-performing team working towards delivering outstanding value to our people, community, customers and shareholders.

We operate with our vision front of mind.



We are authentic and transparent

We are open and honest in the way we work and communicate.

We convey the same message to all stakeholders.



We are inclusive and respectful

We are respectful and empower each other in order to create a safe collaborative environment.

We embrace our differences and benefit from diversity of ideas and opinions.

What our Values mean to Management



Since I joined Arafura in 2006, I have understood that our Company's values form the foundation for an organisation which acknowledges the wellbeing of its people as we all work hard to deliver the world-class Nolans NdPr Project.

Our values define, through support and respect for individuals, the way we work together to achieve the best possible results.

One of Arafura's greatest assets is that its values have forged a dedicated group of people, focussed on achieving its vision through a genuine commitment to the Company and each other.

- **Gavin Lockyer | Managing Director**



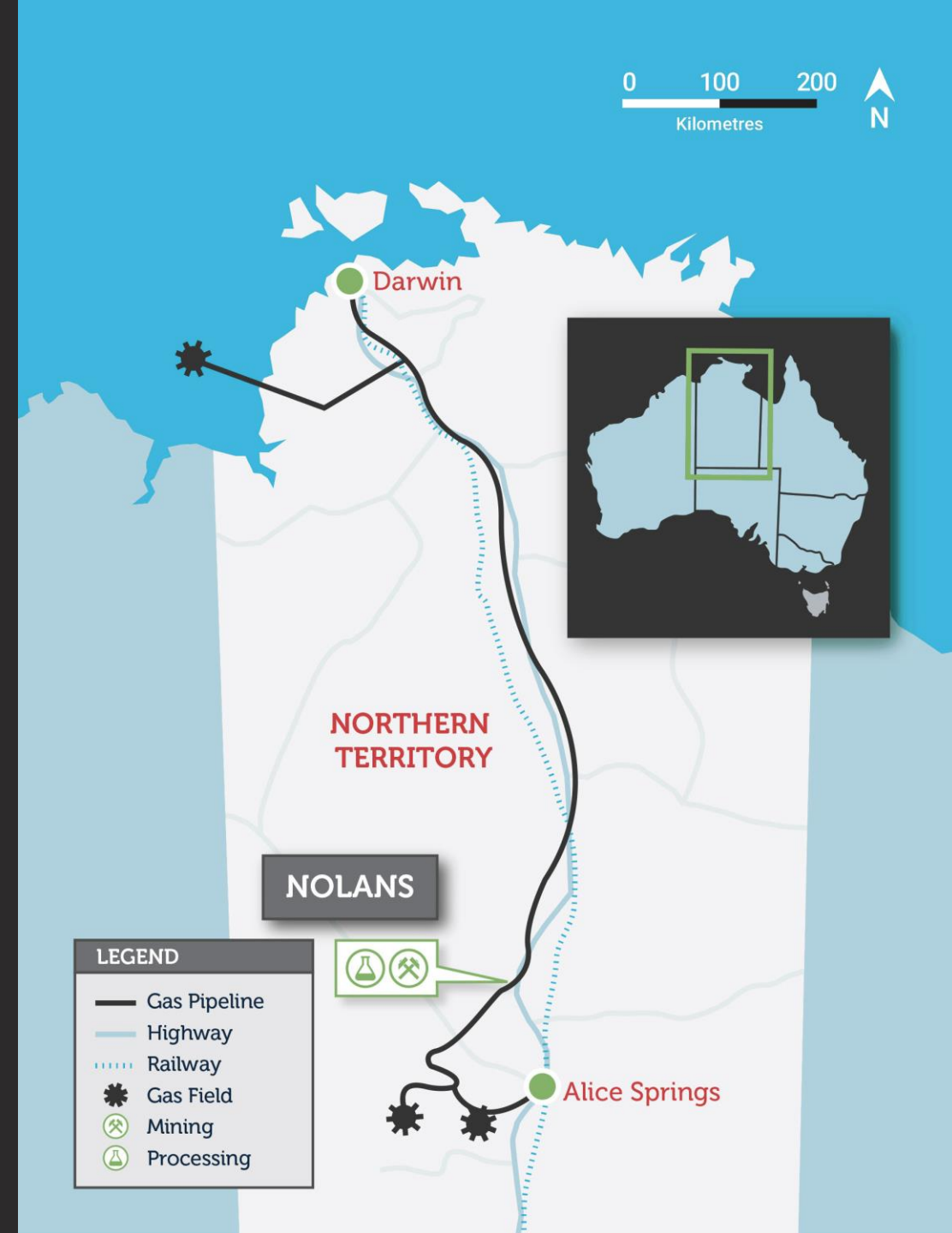
The core of Arafura's values in my opinion comes back to the simple principles of having a clear vision of where we want to go and then being our best version of ourselves to deliver on that vision.

Part of being your best version is working hard for everyone in the team, facing success and challenges together and having each other's backs when the going gets tough. The Nolans Project is an opportunity to deliver something for all stakeholders that is truly amazing, and it is something that I am proud to be part of.

- **Stewart Watkins | GM Projects**

Project Overview

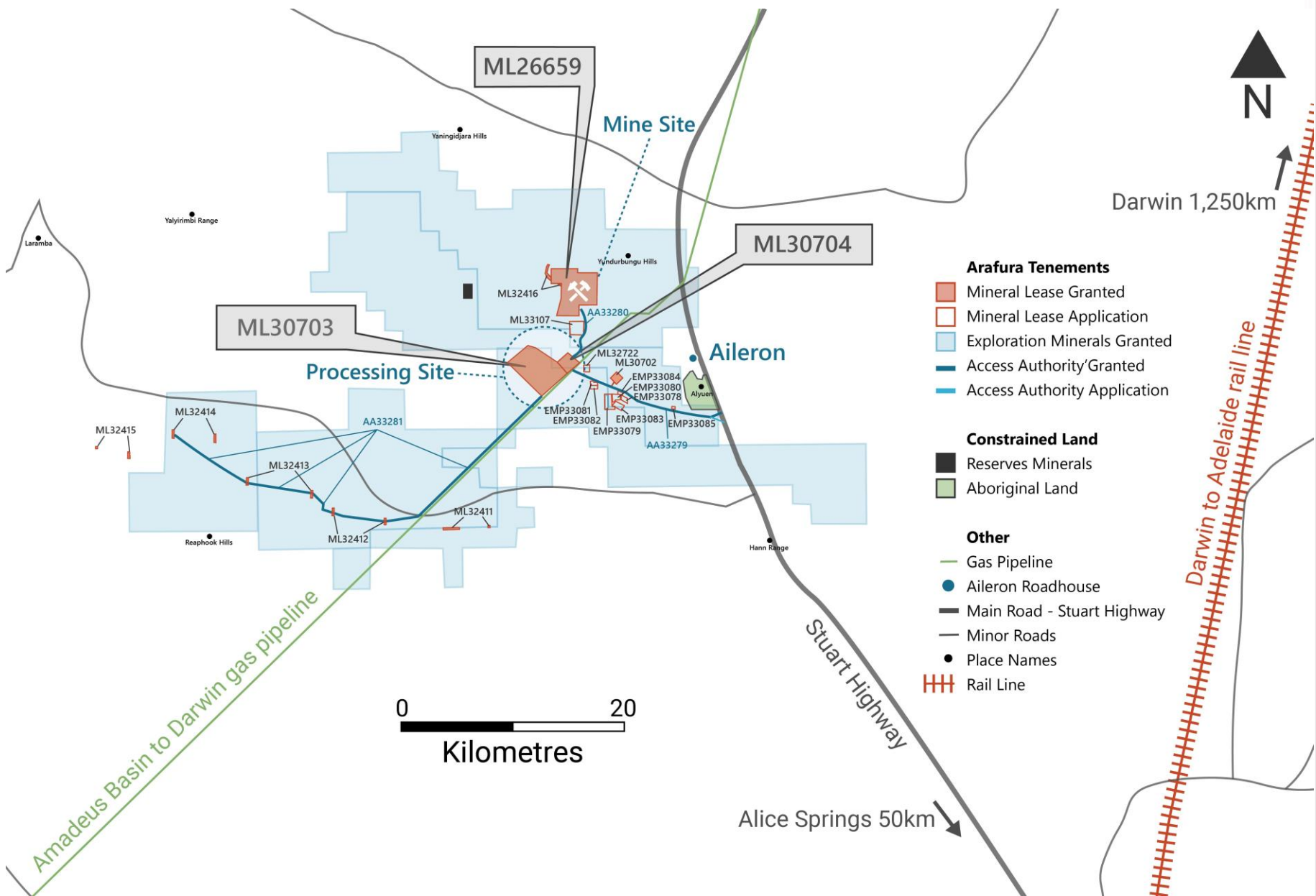
- ✓ Nolans project is located 135 km north-northwest of Alice Springs.
- ✓ Project consists of:
 - ✓ Mine site –open-cut mining operations
 - ✓ Processing site
 - ✓ Borefield for process water
 - ✓ Accommodation village site
- ✓ Project life of 38 years.
- ✓ The project is targeting a mineral deposit of rare earths.
- ✓ Project will supply 4% of the world's magnet feed demand through its production of NdPr (Neodymium-Praseodymium) oxide.
- ✓ This is Arafura's first mining and chemical processing operation.



Site Overview



Tenements



Arafura has particular areas that we are allowed to operate on. Employees must not go outside of those areas. They include:

- ✓ ML26659 (Mine Site)
- ✓ ML30702
- ✓ ML30703 & ML30704 (processing plant)
- ✓ ML32411-32415 (Borefield area)
- ✓ EMP33078-33085
- ✓ AA33279 (from Stuart Highway to processing plant)
- ✓ AA33280 (from processing plant to mine site)
- ✓ AA33281 (from processing plant to borefield area)

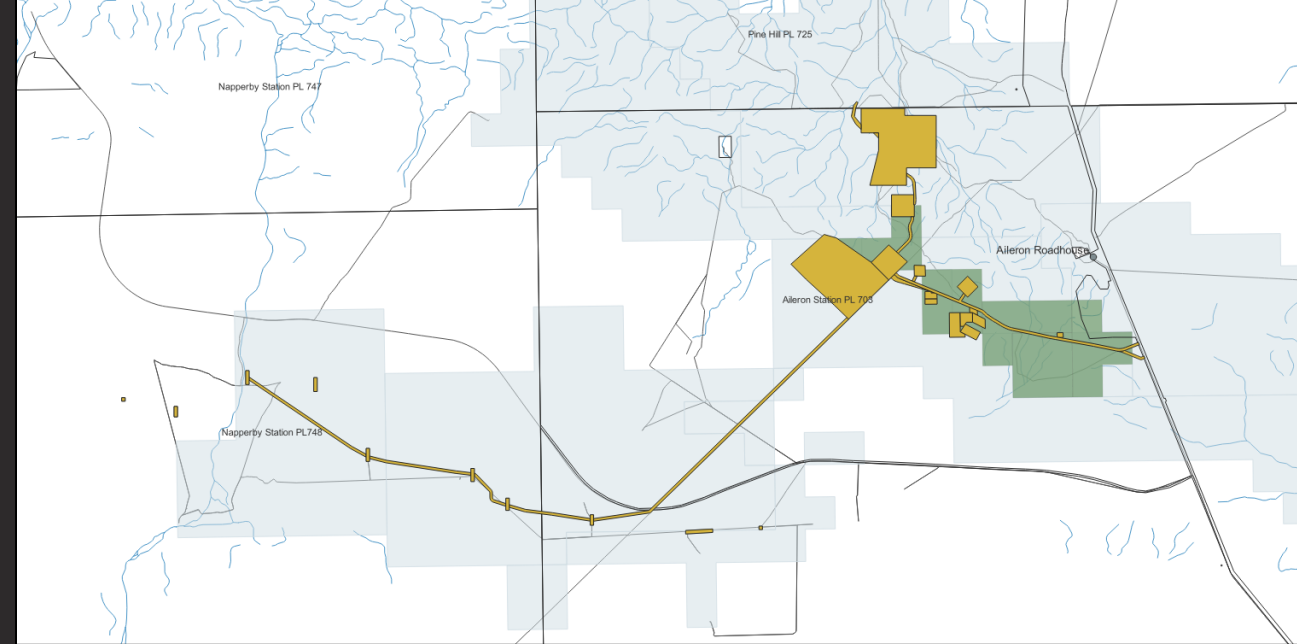
Aileron Station

Aileron Pastoral Holding Pty (APH) is a working cattle station that is owned by the Caason Group from Melbourne.

The station property is located on the traditional lands of the Anmatyerr people.

Arafura needs to effectively collaborate with APH while consistently minimizing its impact on the station's operations.

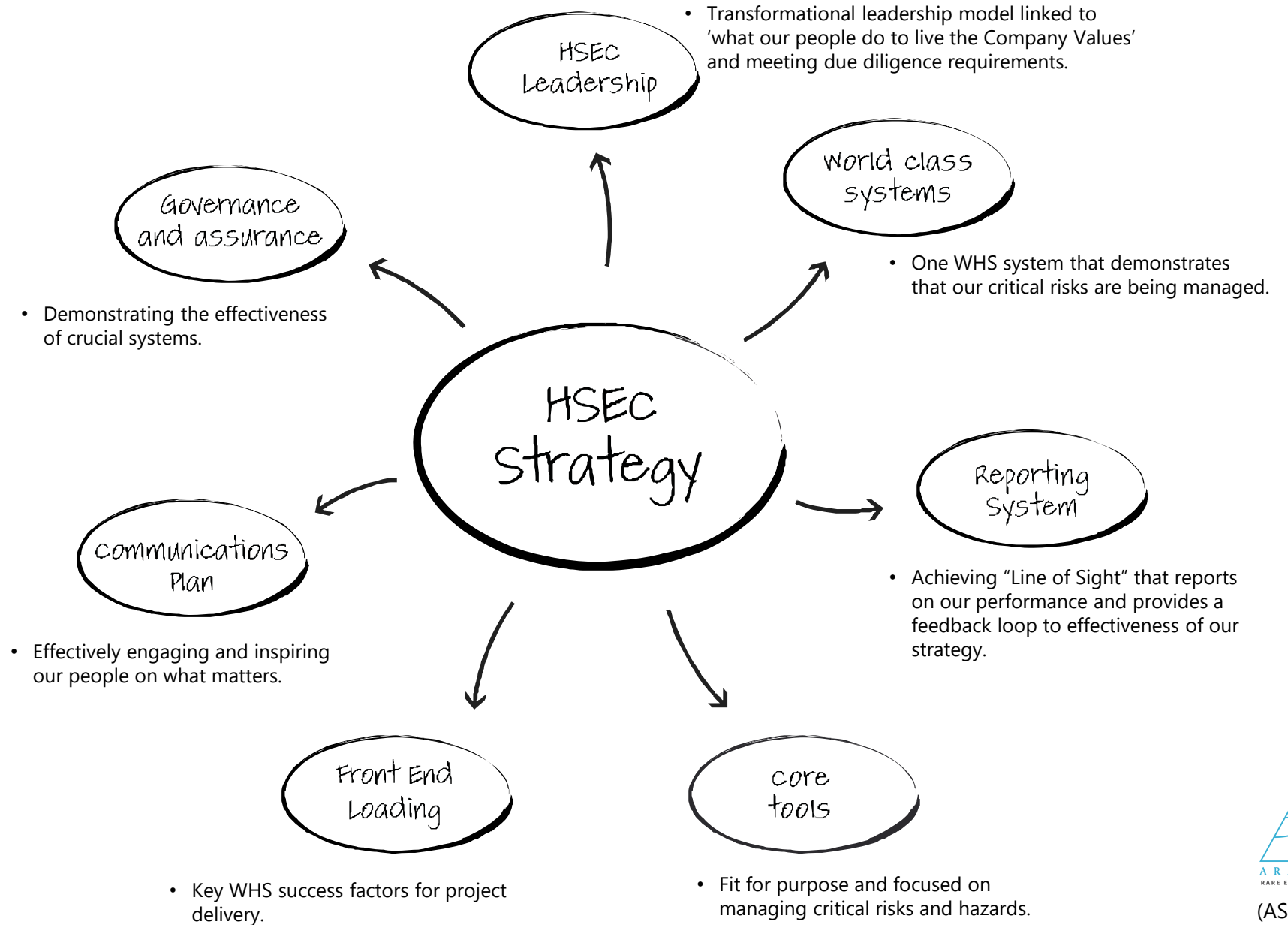
- ✓ Do not drive off Arafura's roads and onto any station roads.
- ✓ Biosecurity of the station is a core value of Arafura– all vehicles and equipment must be inspected for pest weeds, seeds and contaminants before entering site.
- ✓ As a precaution against grass fires, thorough inspections of vehicles, particularly around their exhaust systems, are necessary due to severe weather conditions. (All vehicles must be equipped with a fire extinguisher)
- ✓ Drive past cattle slowly. Do not scare them.
- ✓ Report any sick or injured animals. (cattle)
- ✓ Leave all gates as you find them.
- ✓ Do not bring plants or animals into the site.
- ✓ Do not walk or explore areas outside the projects designated working areas.
- ✓ Waste shall be disposed of appropriately to prevent environmental pollution.





Work, Health & Safety

WHS, Environment and Community Strategy



Occupational Health and Safety Policy

Arafura believes that all incidents and accidents are preventable. Our goal is to be recognised as an organisation that is an industry leader in its health and safety performance and to eliminate workplace hazards as far as practicable.

Our main aims are to:

- ✓ Prevent injury.
- ✓ Prevent damage to property and equipment.
- ✓ Protect the environment and prevent environmental impact.
- ✓ Prevent incidents relating to indigenous heritage/ protect sacred sites and cultural heritage.
- ✓ Comply with all relevant legislation and industry requirements.

Lifesaving Commitments

The nine life-saving commitments are:

1. Never approach operating heavy equipment without making verbal positive contact with the operator.
2. Ensure my vehicle is safe for driving and will drive responsibly and to conditions.
3. Never work at heights without appropriate fall protection or fall prevention.
4. Never work in the line of fire of a suspended load.
5. Ensure all electrical hazards are understood and controlled before starting any work.
6. Not to enter a confined space without appropriate authorisation and training.
7. Ensure all energy sources have been isolated and my personal lock has been placed before working on any piece of equipment.
8. Talk to my supervisor if I am feeling fatigued and I will not present to work under the influence of alcohol and/ or drugs.
9. Any incident resulting from a commitment not being adhered to, will be treated seriously in light of these risks and a thorough investigation will follow.

Principal Hazards

Contact with Electricity (Energy Isolation)



- I must isolate and discharge all energy sources.
- I must always verify disconnection / isolation and lockout has taken place with the relevant Certificate of Compliance (COC) Documentation.
- I must not work on or around live services unless licensed and approved to do so.

Lifting Operations



- I must never stand under a suspended load.
- I must never operate lifting equipment without appropriate training and licenses.
- I must never lift any load over anyone.
- I will ensure the lifting device can safely lift the load.

Confined Spaces



- Only enter a confined space if a permit has been issued.
- I must be appropriately trained and authorised to do so.
- I will perform gas testing before entering the space.

Fall from Height



- I must be appropriately trained.
- I must be anchored at all times.
- Excluding scissor lifts, completed scaffolding and where edge protection is provided designed to AS1657 – Fixed Platforms, walkways, stairways and ladder.

Fire or Uncontrolled Explosion



- Hot works permit will be in place for hot works.
- I will follow and have in place all equipment and precautions in the HWP.
- I must adhere to all local government fire bans and restrictions.
- I will adhere to all blast notifications.

Vehicle/Mobile Plant Operation



- I must hold the correct licence/ticket for the vehicle or plant that I am operating.
- I must perform prestart inspection on the vehicle or plant I am operating.
- I must comply with all road laws/site rules and drive to conditions.
- I must not use mobile phone when operating a vehicle or plant (except if fitted with hands free).

Unplanned Community Access



- Provision of clear maps for local community members.
- Maintenance (grading) of local access tracks.
- Provision of community education.
- Provision of bi-lingual signs and symbols.

High-Risk Work Permits



- I must always comply with permit to work requirements.
- A permit to work is required for:
 - Hot work
 - Confined space entry
 - Excavation (Dig and Entry)
 - Removal of grid mesh/checker plate flooring
 - Energy isolation

Hazards and Risks in the Workplace

A **Hazard** is a source or a situation with the potential for harm in terms of human injury or ill-health, damage to property, damage to the environment, or a combination of these.

A **Risk** is the chance of something happening that will have a negative effect. The possibility of harm (death, injury or illness) might occur when exposed to a hazard.

Hazards - Risks

Noisy machinery	- Hearing loss.
Chemicals	- Poisoning and burns, long term health conditions.
Electrical equipment	- Electric Shock and/or fires.
Working at Heights	- Falls causing fatalities or major injuries.
Confined spaces	- Engulfment, asphyxia and major injuries.
Manual Handling	- Body stressing and musculoskeletal disorders.
Transport	- Vehicle collision or rollover, impact on person.
Environmental Conditions e.g., Dust	- Respiratory problems.

Our Expectations

- ✓ It is the responsibility of each individual to cease work in case of unsafe conditions or if uncertain about safety.
- ✓ All persons shall be appropriately trained and competent in the tasks they perform.
- ✓ Every individual adheres to Safety Procedures and complies with safe work instructions that are applicable to the task being carried out.
- ✓ All incidents inclusive of near miss, dangerous events, injury or work caused illness are to be immediately reported even if no injury occurs.
- ✓ Emergency response plans will be in place before commencement of all high-risk work.
- ✓ Where an SWP or instruction doesn't exist a JHA must be conducted prior to commencing work.
- ✓ Pre-job risk assessments and JHA's are to be updated whenever there are changes to the working environment/ conditions.
- ✓ Do not tamper with any safety device, including smoke alarms, danger and isolation tags.

Our Expectations

- ✓ Never work without wearing the prescribed PPE for the task. It is the wearers responsibility to maintain and/or obtain replacement PPE.
- ✓ Do not operate mobile plant and equipment without a relevant, valid license and/or VOC, or allow any unauthorised or untrained person to do so.
- ✓ Work on any plant or equipment without obtaining relevant permits and adhering to isolation procedures is prohibited.
- ✓ Ensure appropriate controls are in place before working at height e.g., permit, JHA, fit for purpose fall restraint/ arrest equipment, rescue plan.
- ✓ Never enter a Confined Space without following all of the entry procedures e.g., permit, JHA, rescue plan, monitoring, isolation.
- ✓ Consumption of alcohol, drugs, and other substances likely to cause impairment to a person's fitness for work are prohibited.
- ✓ Under no circumstance is it acceptable to steal, engage in acts of vandalism, or physically and/or emotionally harass other persons.

Site Mandatory PPE

All PPE must be task specific and conform to relevant Australian Standards

- ✓ **Safety boots;** Leather (Steel or High Impact Polymer Alloy), laced up, above ankle. (AS/NZS 2210)
- ✓ **Safety Helmet** (hard hat) – (AS/NZS 1801), chin straps must be used when working at height.
- ✓ **Safety Glasses** (tinted and clear), must be correct fitting. (AS/NZS 1337)
- ✓ **Gloves,** specific to TASK. (AS/NZS 2161)
- ✓ **High Visibility Clothing** - (AS/NZS 4602) with reflective tape (long sleeves and long pants).

JHA's may stipulate additional PPE requirements for certain tasks.

UV Protection

- ✓ SPF 30+ sunscreen is available on site; it is recommended personnel use sunscreen when working outdoors.
- ✓ Wearing of Safety Helmet brims or neck flaps is encouraged.



First Aid Room and Paramedic Information

All injuries or work caused illness **MUST** be reported to your supervisor/escort.

There are several **First Aid Posts** at the Nolans Project;

- ✓ Identify the closest location to your designated work area.
- ✓ There are **First Aid/ Medical Rooms** located in the village.

The **Paramedic** onsite is available 24/7

Contact details for the Medical center are;

- ✓ Ph **0448 062 118** (monitored 24/7).
- ✓ **UHF Ch 11** (during manning hours).



Environment



Indigenous and Community Management

There are three native title determinations covering the Project area:

- ✓ DCD2013/001 – Napperby Perpetual Pastoral Lease - Alherramp Ilewerr Mamp Arrangkey Tywerl (AIMAT), Native Title Party,
- ✓ DC2014/002 – Aileron Pastoral Lease - IPY Native Title Party and
- ✓ DC2007/002 – Aileron - Kwaty Native Title Party.



Central Land Council is the representative body of the three Native Title claimants.



Arafura has a signed Native Title Agreement that guarantees the protection of Sacred Areas, Country, Royalties, and employment for local indigenous people.



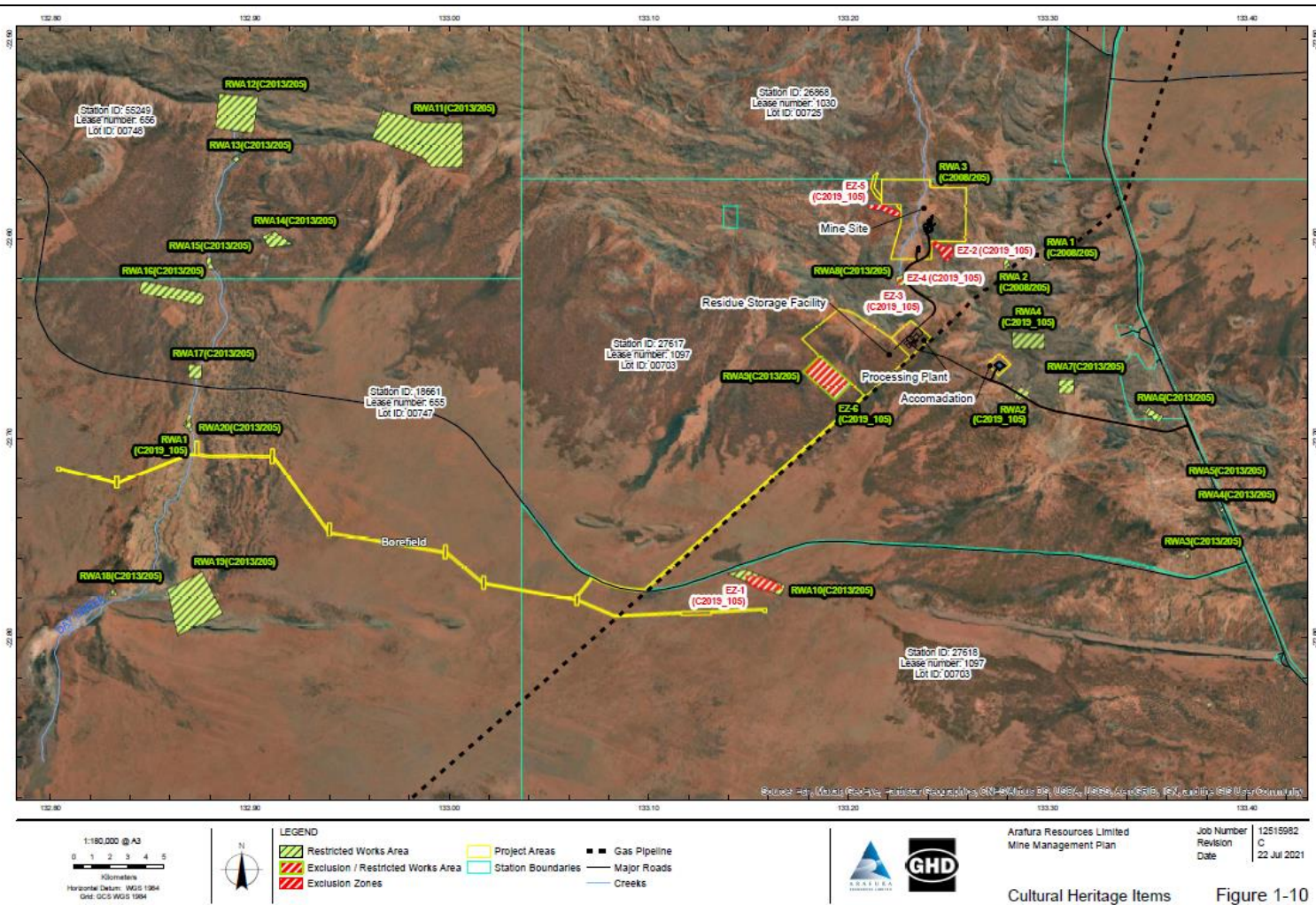
There are around 500 people in small communities surrounding the mine site and the town of Ti Tree.



The mine site is located in the Central Desert Regional Council.

Cultural Heritage

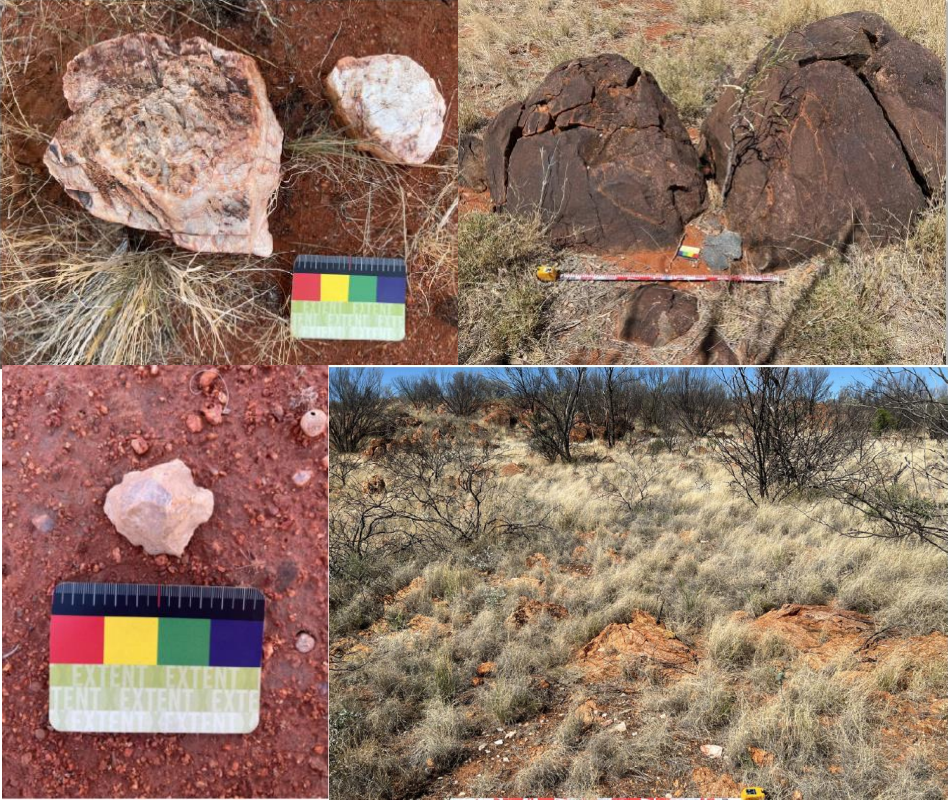
- ✓ Cultural Heritage areas consist of our Restrictive Work Areas, Exclusion Zones, and objects which are significant within the project.
- ✓ These areas have been delineated and must not be accessed.
- ✓ Only drive on the designed roads.



(ASX:ARU)

Objects and Places of Significance

- ✓ Report any damage to cultural heritage or sensitive areas.
- ✓ Notify unexpected findings and stop any activities.



Land Disturbance Permit

- ✓ Complete the ground disturbance permit and get approval prior to any disturbance.
- ✓ Avoid disturbance in sensitive areas, including riparian zones.
- ✓ Minimise the disturbance outside the approved areas for clearing.



Weed Management

- ✓ All equipment must present to site free of weed seeds and soil.
- ✓ Earthmoving equipment must be inspected by Arafura staff priority engaging in site works.
- ✓ Earthmoving equipment must be washdown prior to changing work areas.
- ✓ Report all declared weeds to the Environmental Department.

Prickly pears & rope cacti – *Opuntia* spp. (Class A)

OPTIMUM TREATMENT TIMES

darker colour indicates preferred treatment times

JAN	FEB	MAR	APR	MAY	JUN
JUL	AUG	SEP	OCT	NOV	DEC



Caltrop – *Tribulus cistoides* and *Tribulus terrestris* (Class B)

OPTIMUM TREATMENT TIMES

darker colour indicates preferred treatment times

JAN	FEB	MAR	APR	MAY	JUN
JUL	AUG	SEP	OCT	NOV	DEC



Saffron thistle – *Carthamus lanatus* (Class B)

OPTIMUM TREATMENT TIMES

darker colour indicates preferred treatment times

JAN	FEB	MAR	APR	MAY	JUN
JUL	AUG	SEP	OCT	NOV	DEC



Rubber bush – *Calotropis procera* (Class B South of 16°30'S latitude)

OPTIMUM TREATMENT TIMES

darker colour indicates preferred treatment times

JAN	FEB	MAR	APR	MAY	JUN
JUL	AUG	SEP	OCT	NOV	DEC



Threatened Species

- ✓ Never feed wildlife and report any sighting of native dingoes.
- ✓ Do not interact with wildlife, including dingoes.
- ✓ Use approved roads and follow speed limits.
- ✓ Report any fauna injury/ death to Environmental Department.
- ✓ Report any sightings of feral cats and feral foxes.



Black-footed rock-wallaby
(*Petrogale lateralis*)



Great Desert Skink
(*Liopholis kintorei*)

Waste Management

- ✓ Disposing of waste correctly at the waste transfer area.
- ✓ Segregate waste in accordance with signage.
- ✓ Report any inappropriate waste disposal. Waste burning isn't allowed.
- ✓ Disposal requirements in accordance with Safety Data Sheets.
- ✓ Hazardous waste, such as hydrocarbon-contaminated material, must be separated and disposed of offsite.

