

ASX: ARU

July 2024

Nolans Project Induction

Visitors (Pre-Construction)



Induction Summary

- 1 Our Vision and Values
- 2 Project Overview
- 3 Site Overview
- 4 Health and Safety
- 5 Environment and Community

General Information

Our Vision and Values

Our Vision



To be the trusted, leading rare earths partner of customers in high impact technologies and enduringly lift the sustainability of our planet.

Our Values

Our values underpin everything we do – they guide the decisions we make, the way we operate and how we approach delivery of the Nolans Project. They keep us focused on what is most important and assist us to define what sustainable delivery and responsible mining and processing operations look like for our business.



We are ethical and accountable

We are guided by our moral compass and own our decisions. We strongly believe in a sustainable future and our actions are guided by this.



We are resilient and innovative

We encourage agile thinking and innovative ideas to find solutions. We are resilient and adaptive to the changing landscape of the industry.



We are authentic and transparent

We are open and honest in the way we work and communicate. We convey the same message to all stakeholders.



We are committed to our purpose and stakeholders

We are a high-performing team working towards delivering outstanding value to our people, community, customers and shareholders. We operate with our vision front of mind.



We are inclusive and respectful

We are respectful and empower each other in order to create a safe collaborative environment. We embrace our differences and benefit from diversity of ideas and opinions.

Project Overview



Located **135km north of Alice Springs.**



Project life of **38 years.**



Project consists of:

- Mine site: open-cut mining operations
- Processing site
- Borefield for process water
- Accommodation village site



Project will supply **~4% of the worlds magnet rare earths supply** through its production of NdPr (Neodymium Praesodymium) oxide.



This is Arafura's **first mining and chemical processing operation.**



Site Overview



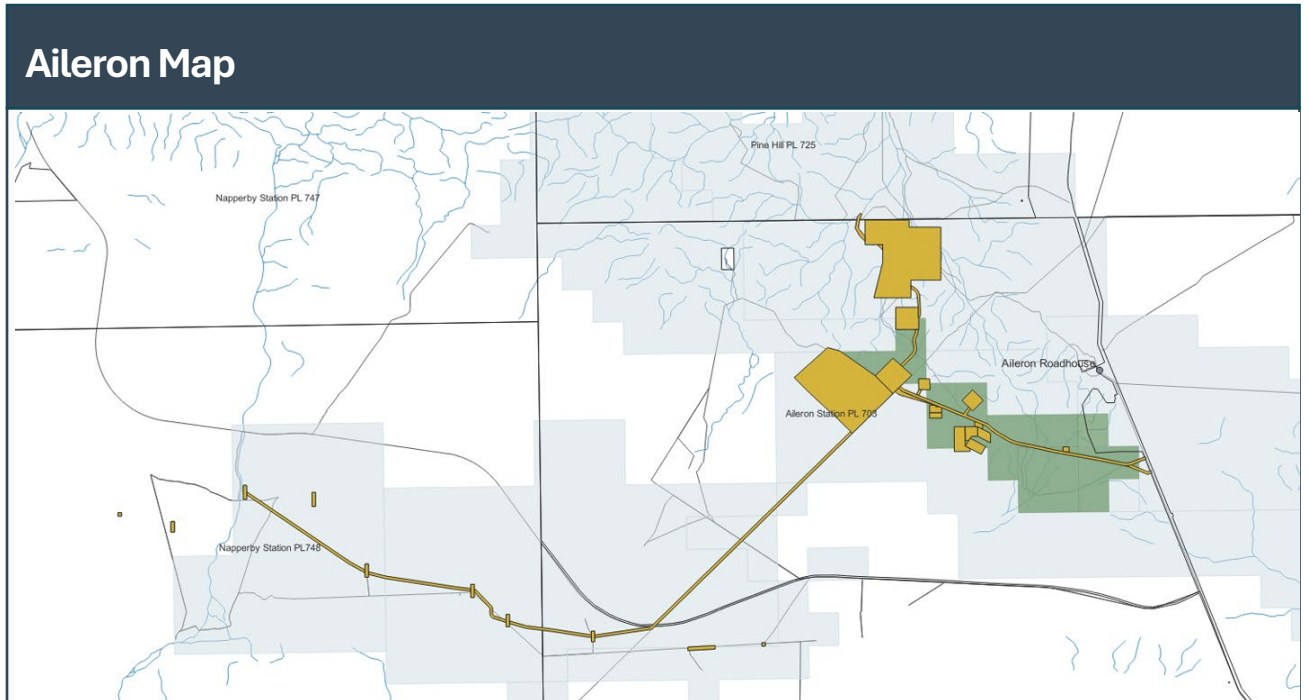
Aileron Station

Aileron Pastoral Holding Pty (APH) is a working cattle station that is owned by the Caason Group from Melbourne.

The station property is located on the traditional lands of the Anmatyerr people.

Arafura needs to effectively collaborate with APH while consistently minimising its impact on the station's operations.

- Do not drive off Arafura's roads and onto any station roads.
- Biosecurity of the station is a core value of Arafura—all vehicles and equipment must be inspected for pest weeds, seeds and contaminants before entering site.
- As a precaution against grass fires, thorough inspections of vehicles, particularly around their exhaust systems, are necessary due to severe weather conditions. (All vehicles must be equipped with a fire extinguisher)
- Drive past cattle slowly. Do not scare them.
- Report any sick or injured animals (cattle).
- Leave all gates as you find them.
- Do not bring plants or animals into the site.
- Do not walk or explore areas outside the projects designated working areas.
- Waste shall be disposed of appropriately to prevent environmental pollution.



Work, Health and Safety

What to bring and what to expect on the day

For your Site Visit you will need to bring:

- **Closed Shoes**
- **Long Trousers / Pants**
- **A Long-Sleeved Shirt or Top** – This can be a high visibility shirt. If it isn't, Site Security will provide you a high visibility vest to wear over your shirt / top.
- **Sun-Glasses**
- **SPF 30+ (or higher) Sunscreen**
- **Drinking Water** – This can be bought in Alice Springs or at the Aileron Roadhouse. We recommend you bring more than you think you will need.
- **Your Food**
- **A Hat** – Your host will provide a hat to you, if you don't bring your own.

First Aid

All injuries or illness that occur whilst you are onsite **MUST** be reported to your Host and Site Security (who are First Aid Qualified).

There is a Wall Mounted First Aid Kit in the Security Office; Each Project vehicle also has a fully stocked First Aid Kit.



Contact details for Security:

Phone: 0428 662 001
UHF: Ch 11.

What to expect on the day:

- Prior to your visit, a Journey Management Plan (JMP) will have been approved for your travel by road from Alice Springs to the Project Site, and return.
- Your host (driver), Site Security and the Project H&S Manager will all have a copy. Your host (driver) will let Security know when you're leaving Alice Springs so they can check in at any agreed time, or if you don't make your ETA.
- The Project Security Office is immediately behind the Aileron Roadhouse. Security will meet and greet the party there and provide a short briefing on the site conditions, hazards, communications and any other relevant information you'll need.
- Security will sign you in and conduct breathalyser screening for alcohol. You'll need to be 0.000% to continue onto site.
- Security will give your host a satellite phone for better communication coverage.
- Security will also escort the party's vehicle to the areas required for the visit, as they are familiar with the routes and road conditions following a recent period of significant rain.
- Security will sign you off as you leave site for Alice Springs.
- Your host will let Security know when you've arrived back in Alice Springs.

Environment and Community

Indigenous and Community Management

There are three native title determinations covering the Project area:

- **DCD2013/001** – Napperby Perpetual Pastoral Lease - Alherramp Ilewerl Mamp Arrangkey Tywerl (AIMAT), Native Title Party,
- **DC2014/002** – Aileron Pastoral Lease IPY Native Title Party and
- **DC2007/002** – Aileron - Kwaty Native Title Party.



Central Land Council is the representative body of the three Native Title claimants



There are around 500 people in small communities surrounding the mine site and the town of Ti Tree.



Arafura has a signed Native Title Agreement that guarantees the protection of Sacred Areas, Country, Royalties, and employment for local indigenous people.

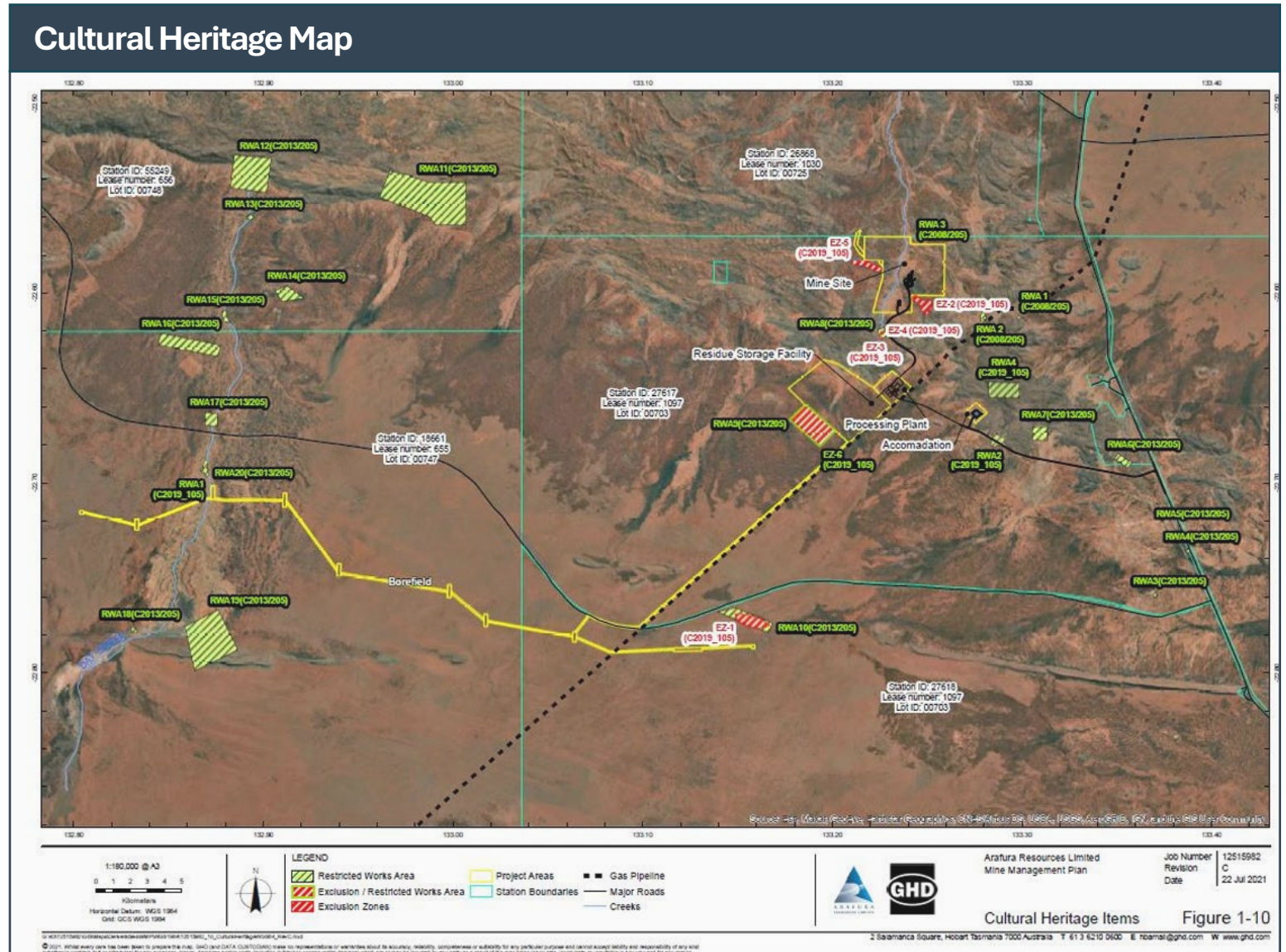


The mine site is located in the Central Desert Regional Council.

Cultural Heritage

Cultural Heritage areas consist of our Restrictive Work Areas, Exclusion Zones, and objects which are significant within the project.

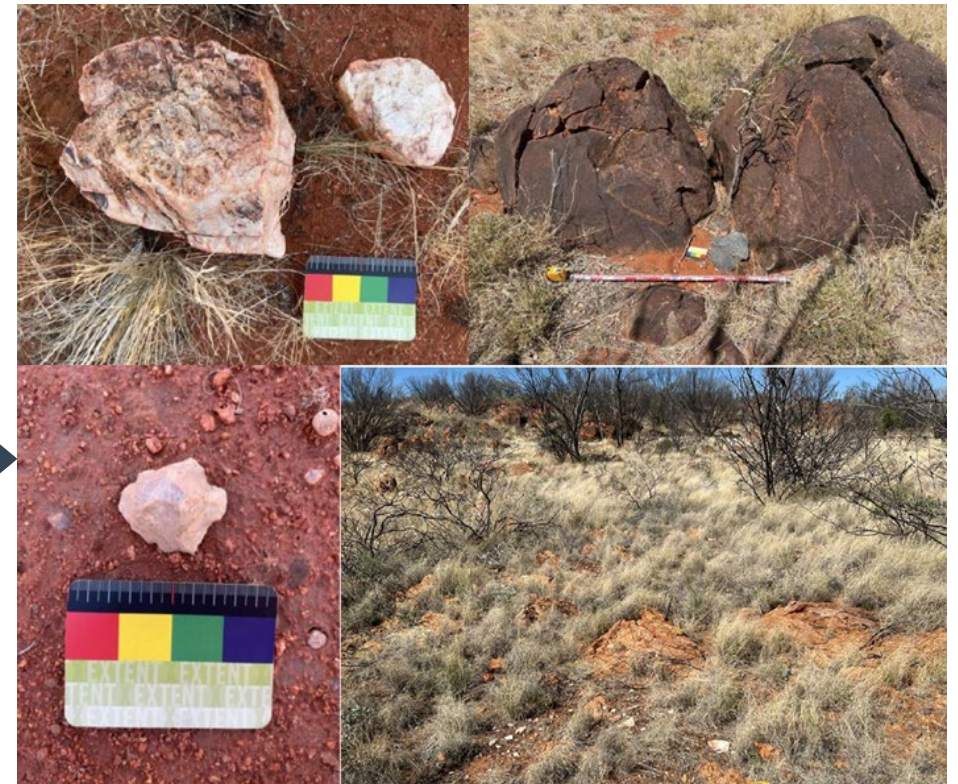
- These areas have been delineated and must not be accessed.
- Only drive on the designed roads.



Objects & Places of Significance

1. Report any damage to cultural heritage or sensitive areas.
2. Notify unexpected findings and stop any activities.

Objects & Places of Significance Map



Threatened Species

- Never feed wildlife and report any sighting of native dingoes.
- Do not interact with wildlife, including dingoes.
- Use approved roads and follow speed limits.
- Report any fauna injury/ death to Environmental Department.
- Report any sightings of feral cats and feral foxes.

Black-footed rock-wallaby (*Petrogale lateralis*)



Great Desert Skink (*Liopholis kintorei*)



Contact

Level 6, 432 Murray St
Perth WA 6000

PO Box 5773
St Georges Terrace
Perth WA 6831

T: +61 8 6370 2800

E: arafura@arultd.com
(All corporate and general enquiries)

E: nolansproject@arultd.com
(Nolans Project enquiries only)

